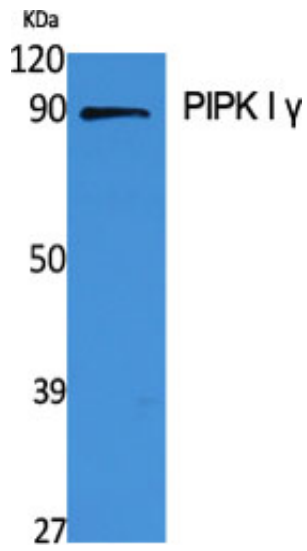


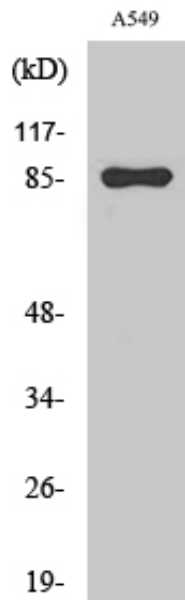
PIPK I γ Polyclonal Antibody

Catalog_no :	AT3735
Applications :	WB,ELISA
Reactivity :	Human
Category :	抗原抗体
Size :	100 μ g/50 μ g/20 μ g
Gene_name :	PIP5K1C
Protein_name :	Phosphatidylinositol 4-phosphate 5-kinase type-1 gamma
Humangene_id :	23396
Humanswissprot_no :	O60331
Immunogen :	The antiserum was produced against synthesized peptide derived from human PIP5K1C. AA range:305-354
Specificity :	PIPK I γ Polyclonal Antibody detects endogenous levels of PIPK I γ protein.
Formulation :	Liquid in PBS containing 50% glycerol, 0.5% BSA and 0.02% sodium azide.
Source :	Rabbit
Dilution :	Western Blot: 1/500 - 1/2000. ELISA: 1/20000. Not yet tested in other applications.
Purification :	The antibody was affinity-purified from rabbit antiserum by affinity-chromatography using epitope-specific immunogen.
Concentration :	1 mg/ml
Storage_stability :	-20°C/1 year
Msds :	MSDS_Antibody.pdf
Other_name :	PIP5K1C; KIAA0589; Phosphatidylinositol 4-phosphate 5-kinase type-1 gamma; PIP5K1-gamma; PtdIns(4)P-5-kinase 1 gamma; Phosphatidylinositol 4-phosphate 5-kinase type I gamma; PIP5KIgamma
Molecular Weight :	80KD

Product Images



Western Blot analysis of various cells using PIPK I γ Polyclonal Antibody



Western Blot analysis of A549 cells using PIPK I γ Polyclonal Antibody