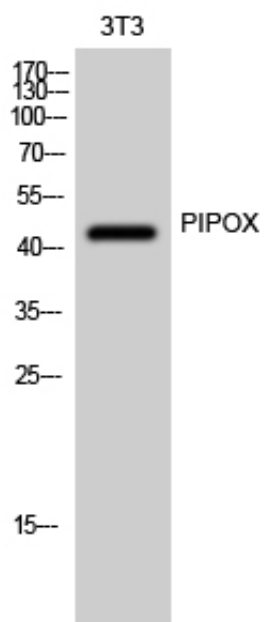


PIPOX Polyclonal Antibody

Catalog_no :	AT3736
Applications :	WB,ELISA
Reactivity :	Human
Category :	抗原抗体
Size :	100µg/50µg/20µg
Gene_name :	PIPOX
Protein_name :	Peroxisomal sarcosine oxidase
Humangene_id :	51268
Humanswissprot_no :	Q9P0Z9
Immunogen :	The antiserum was produced against synthesized peptide derived from human PIPOX. AA range:257-306
Specificity :	PIPOX Polyclonal Antibody detects endogenous levels of PIPOX protein.
Formulation :	Liquid in PBS containing 50% glycerol, 0.5% BSA and 0.02% sodium azide.
Source :	Rabbit
Dilution :	Western Blot: 1/500 - 1/2000. ELISA: 1/5000. Not yet tested in other applications.
Purification :	The antibody was affinity-purified from rabbit antiserum by affinity-chromatography using epitope-specific immunogen.
Concentration :	1 mg/ml
Storage_stability :	-20°C/1 year
Msds :	MSDS_Antibody.pdf
Other_name :	PIPOX; LPIPOX; PSO; Peroxisomal sarcosine oxidase; PSO; L-pipecolate oxidase; L-pipecolic acid oxidase
Molecular Weight :	44KD

Product Images



Western Blot analysis of 3T3 cells using PIPOX Polyclonal Antibody