

## PITPβ Polyclonal Antibody

Catalog_no :	AT3738
Applications :	WB,ELISA
Reactivity :	Human,Mouse,Rat
Category :	抗原抗体
Size :	100μg/50μg/20μg
Gene_name :	PITPNB
Protein_name :	Phosphatidylinositol transfer protein beta isoform
Humangene_id :	<a href="#">23760</a>
Humanswissprot_no :	<a href="#">P48739</a>
Mousegene_id :	<a href="#">56305</a>
Mouseswissprot_no :	<a href="#">P53811</a>
Ratgene_id :	<a href="#">114561</a>
Ratswissprot_no :	<a href="#">P53812</a>
Immunogen :	The antiserum was produced against synthesized peptide derived from human PITPNB. AA range:20-69
Specificity :	PITPβ Polyclonal Antibody detects endogenous levels of PITPβ protein.
Formulation :	Liquid in PBS containing 50% glycerol, 0.5% BSA and 0.02% sodium azide.
Source :	Rabbit
Dilution :	Western Blot: 1/500 - 1/2000. ELISA: 1/40000. Not yet tested in other applications.
Purification :	The antibody was affinity-purified from rabbit antiserum by affinity-chromatography using epitope-specific immunogen.
Concentration :	1 mg/ml
Storage_stability :	-20°C/1 year
Msds :	<a href="#">MSDS_Antibody.pdf</a>



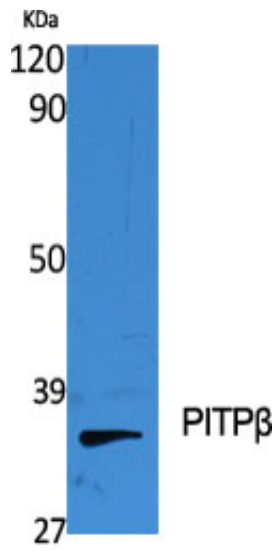
Other\_name : PITPNB; Phosphatidylinositol transfer protein beta isoform; PI-TP-beta; PtdIns transfer protein beta; PtdInsTP beta

---

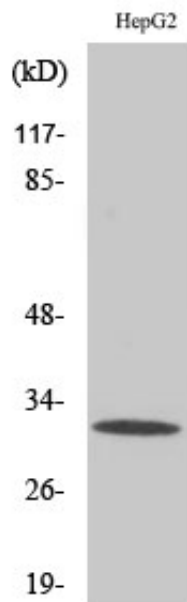
Molecular Weight : 32KD

---

## Product Images



Western Blot analysis of various cells using PITPβ Polyclonal Antibody diluted at 1 : 2000



Western Blot analysis of HepG2 cells using PITPβ Polyclonal Antibody diluted at 1 : 2000