

PKA II β reg Polyclonal Antibody

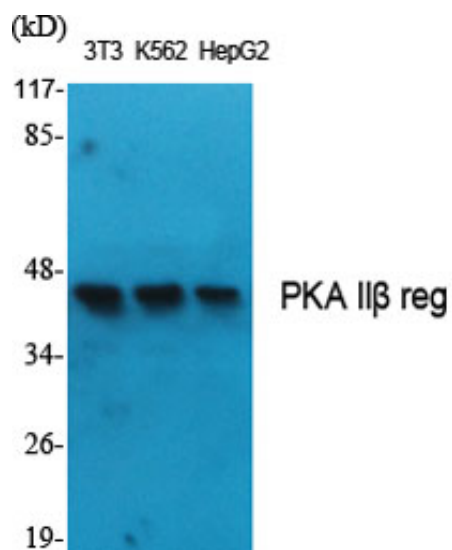
Catalog_no :	<u>AT3745</u>
Applications :	<u>WB,IHC-p,ELISA</u>
Reactivity :	<u>Human,Mouse,Rat</u>
Category :	<u>抗原抗体</u>
Size :	<u>100μg/50μg/20μg</u>
Gene_name :	<u>PRKAR2B</u>
Protein_name :	<u>cAMP-dependent protein kinase type II-beta regulatory subunit</u>
Humangene_id :	<u>5577</u>
Humanswissprot_no :	<u>P31323</u>
Mousegene_id :	<u>19088</u>
Mouseswissprot_no :	<u>P31324</u>
Ratgene_id :	<u>24679</u>
Ratswissprot_no :	<u>P12369</u>
Immunogen :	<u>The antiserum was produced against synthesized peptide derived from human PKA-R2 beta. AA range:79-128</u>
Specificity :	<u>PKA IIβ reg Polyclonal Antibody detects endogenous levels of PKA IIβ reg protein.</u>
Formulation :	<u>Liquid in PBS containing 50% glycerol, 0.5% BSA and 0.02% sodium azide.</u>
Source :	<u>Rabbit</u>
Dilution :	<u>Western Blot: 1/500 - 1/2000. Immunohistochemistry: 1/100 - 1/300. ELISA: 1/10000. Not yet tested in other applications.</u>
Purification :	<u>The antibody was affinity-purified from rabbit antiserum by affinity-chromatography using epitope-specific immunogen.</u>
Concentration :	<u>1 mg/ml</u>
Storage_stability :	<u>-20°C/1 year</u>
Msds :	<u>MSDS_Antibody.pdf</u>



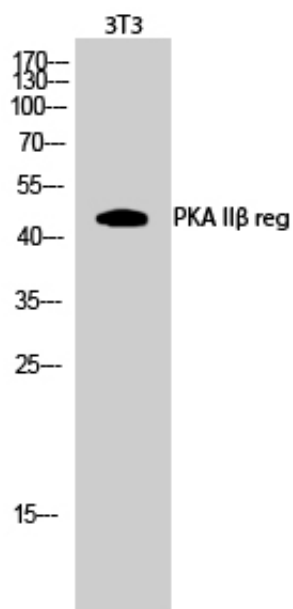
Other_name : PRKAR2B; cAMP-dependent protein kinase type II-beta regulatory subunit

Molecular Weight : 46KD

Product Images



Western Blot analysis of various cells using PKA II β reg Polyclonal Antibody



Western Blot analysis of 3T3 cells using PKA II β reg Polyclonal Antibody