

PKA Iα reg Polyclonal Antibody

Catalog_no :	AT3746
Applications :	WB,IHC-p,IF,ELISA
Reactivity :	Human,Mouse,Rat
Category :	抗原抗体
Size :	100μg/50μg/20μg
Gene_name :	PRKAR1A
Protein_name :	cAMP-dependent protein kinase type I-alpha regulatory subunit
Humangene_id :	5573
Humanswissprot_no :	P10644
Mousegene_id :	19084
Mouseswissprot_no :	Q9DBC7
Ratgene_id :	25725
Ratswissprot_no :	P09456
Immunogen :	The antiserum was produced against synthesized peptide derived from human KAP0. AA range:271-320
Specificity :	PKA Iα reg Polyclonal Antibody detects endogenous levels of PKA Iα reg protein.
Formulation :	Liquid in PBS containing 50% glycerol, 0.5% BSA and 0.02% sodium azide.
Source :	Rabbit
Dilution :	Western Blot: 1/500 - 1/2000. Immunohistochemistry: 1/100 - 1/300. Immunofluorescence: 1/200 - 1/1000. ELISA: 1/20000. Not yet tested in other applications.
Purification :	The antibody was affinity-purified from rabbit antiserum by affinity-chromatography using epitope-specific immunogen.
Concentration :	1 mg/ml
Storage_stability :	-20°C/1 year

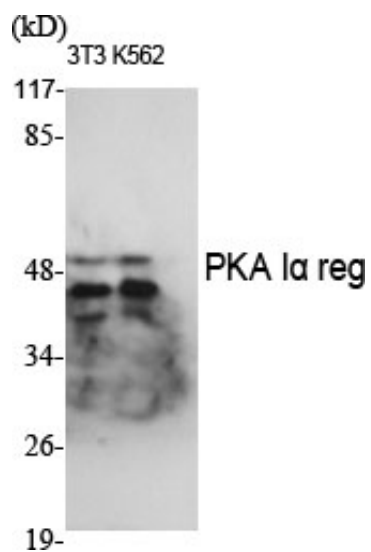


MsdS : MSDS_Antibody.pdf

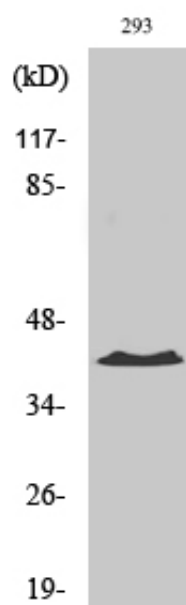
Other_name : PRKAR1A; PKR1; PRKAR1; TSE1; cAMP-dependent protein kinase type I-alpha regulatory subunit; Tissue-specific extinguisher 1; TSE1

Molecular Weight : 43KD

Product Images



Western Blot analysis of various cells using PKA Ia reg Polyclonal Antibody



Western Blot analysis of 293 cells using PKA Ia reg Polyclonal Antibody