

PKA I $\beta$  reg Polyclonal Antibody

Catalog_no :	<u>AT3747</u>
Applications :	<u>WB,IHC-p,ELISA</u>
Reactivity :	<u>Human,Mouse,Rat</u>
Category :	<u>抗原抗体</u>
Size :	<u>100<math>\mu</math>g/50<math>\mu</math>g/20<math>\mu</math>g</u>
Gene_name :	<u>PRKAR1B</u>
Protein_name :	<u>cAMP-dependent protein kinase type I-beta regulatory subunit</u>
Humangene_id	<u><a href="#">5575</a></u>
:	
Humanswissprot	<u><a href="#">P31321</a></u>
_no :	
Mousegene_id :	<u><a href="#">19085</a></u>
Mouseswissprot	<u><a href="#">P12849</a></u>
_no :	
Ratswissprot_no	<u><a href="#">P81377</a></u>
:	
Immunogen :	<u>The antiserum was produced against synthesized peptide derived from human KAP1. AA range:106-155</u>
Specificity :	<u>PKA I<math>\beta</math> reg Polyclonal Antibody detects endogenous levels of PKA I<math>\beta</math> reg protein.</u>
Formulation :	<u>Liquid in PBS containing 50% glycerol, 0.5% BSA and 0.02% sodium azide.</u>
Source :	<u>Rabbit</u>
Dilution :	<u>Western Blot: 1/500 - 1/2000. Immunohistochemistry: 1/100 - 1/300. ELISA: 1/20000. Not yet tested in other applications.</u>
Purification :	<u>The antibody was affinity-purified from rabbit antiserum by affinity-chromatography using epitope-specific immunogen.</u>
Concentration :	<u>1 mg/ml</u>
Storage_stability	<u>-20°C/1 year</u>
:	
Msds :	<u><a href="#">MSDS_Antibody.pdf</a></u>
Other_name :	<u>PRKAR1B; cAMP-dependent protein kinase type I-beta regulatory subunit</u>

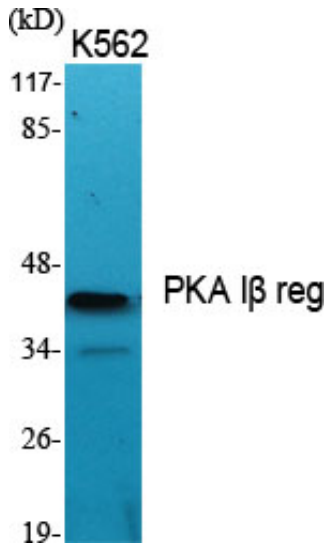


Molecular  
Weight :

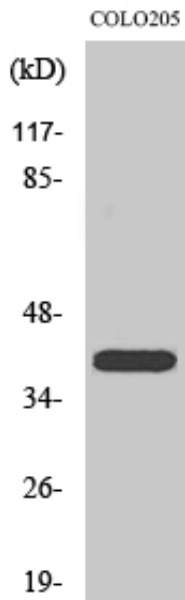
43KD

---

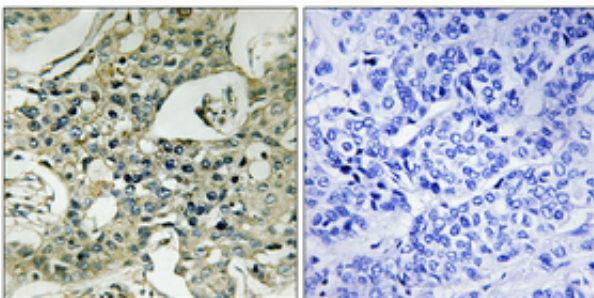
## Product Images



Western Blot analysis of various cells using PKA I $\beta$  reg Polyclonal Antibody



Western Blot analysis of COLO205 cells using PKA I $\beta$  reg Polyclonal Antibody



Immunohistochemical analysis of paraffin-embedded Human breast cancer. Antibody was diluted at 1:100(4°, overnight). High-pressure and temperature Tris-EDTA, pH8.0 was used for antigen retrieval. Negative contrl (right) obtained from antibody was pre-absorbed by immunogen peptide.