

PKA $\alpha$ / $\beta$ / $\gamma$  cat Polyclonal Antibody

Catalog_no :	<u>AT3749</u>
Applications :	<u>WB,IHC-p,IF,ELISA</u>
Reactivity :	<u>Human,Mouse,Rat</u>
Category :	<u>抗原抗体</u>
Size :	<u>100<math>\mu</math>g/50<math>\mu</math>g/20<math>\mu</math>g</u>
Gene_name :	<u>PRKACA/PRKACB</u>
Protein_name :	<u>cAMP-dependent protein kinase catalytic subunit alpha/beta</u>
Humangene_id :	<u><a href="#">5566/5567</a></u>
Humanswissprot_no :	<u><a href="#">P17612/P22694/P22612</a></u>
Mousegene_id :	<u><a href="#">18747/18749</a></u>
Ratgene_id :	<u><a href="#">293508</a></u>
Ratswissprot_no :	<u><a href="#">P27791/P68182</a></u>
Immunogen :	<u>The antiserum was produced against synthesized peptide derived from human PKA alpha/beta CAT. AA range:166-215</u>
Specificity :	<u>PKA<math>\alpha</math>/<math>\beta</math>/<math>\gamma</math> cat Polyclonal Antibody detects endogenous levels of PKA<math>\alpha</math>/<math>\beta</math>/<math>\gamma</math> cat protein.</u>
Formulation :	<u>Liquid in PBS containing 50% glycerol, 0.5% BSA and 0.02% sodium azide.</u>
Source :	<u>Rabbit</u>
Dilution :	<u>Western Blot: 1/500 - 1/2000. Immunohistochemistry: 1/100 - 1/300. Immunofluorescence: 1/200 - 1/1000. ELISA: 1/20000. Not yet tested in other applications.</u>
Purification :	<u>The antibody was affinity-purified from rabbit antiserum by affinity-chromatography using epitope-specific immunogen.</u>
Concentration :	<u>1 mg/ml</u>
Storage_stability :	<u>-20°C/1 year</u>
Msds :	<u>MSDS_Antibody.pdf</u>
Other_name :	<u>PRKACA; PKACA; cAMP-dependent protein kinase catalytic subunit alpha; PKA C-alpha;</u>



PRKACB; cAMP-dependent protein kinase catalytic subunit beta; PKA C-beta; PRKACG;  
cAMP-dependent protein kinase catalytic subunit gamma; PKA C-gamma

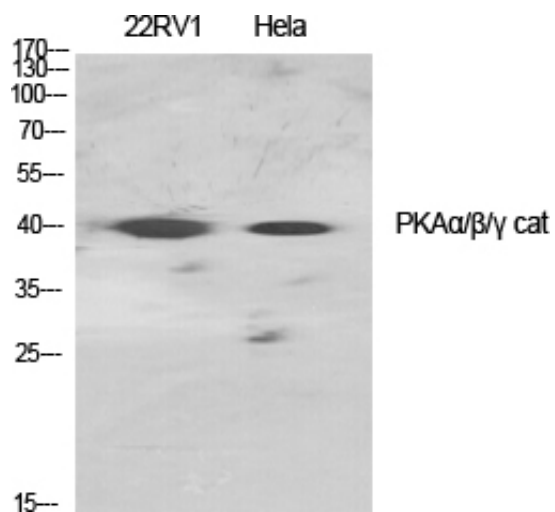
---

Molecular  
Weight :

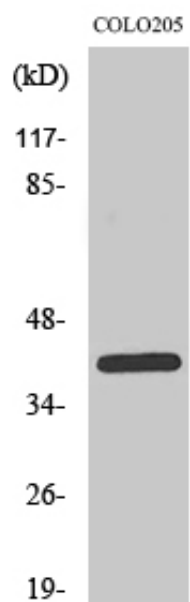
40KD

---

## Product Images



Western Blot analysis of various cells using PKAα/β/γ cat Polyclonal Antibody diluted at 1 : 1000



Western Blot analysis of COLO205 cells using PKAα/β/γ cat Polyclonal Antibody diluted at 1 : 1000