



## PKC $\alpha$ Polyclonal Antibody

|                   |  |
|-------------------|--|
| Catalog_no :      | <u>AT3754</u>  |
| Applications :    | <u>WB,IHC-p,ELISA</u>  |
| Reactivity :      | <u>Human,Mouse,Rat</u>   |
| Category :        | <u>抗原抗体</u>  |
| Size :            | <u>100<math>\mu</math>g/50<math>\mu</math>g/20<math>\mu</math>g</u>  |
| Gene_name :       | <u>PRKCA</u>   |
| Protein_name :    | <u>Protein kinase C alpha type</u>   |
| Humangene_id      | <u><a href="#">5578</a></u>  |
| :                 |  |
| Humanswissprot    | <u><a href="#">P17252</a></u>  |
| _no :             |  |
| Mousegene_id :    | <u><a href="#">18750</a></u>   |
| Mouseswissprot    | <u><a href="#">P20444</a></u>  |
| _no :             |  |
| Ratswissprot_no   | <u><a href="#">P05696</a></u>  |
| :                 |  |
| Immunogen :       | <u>The antiserum was produced against synthesized peptide derived from human PKC alpha. AA range:606-655</u>                   |
| Specificity :     | <u>PKC <math>\alpha</math> Polyclonal Antibody detects endogenous levels of PKC <math>\alpha</math> protein.</u>               |
| Formulation :     | <u>Liquid in PBS containing 50% glycerol, 0.5% BSA and 0.02% sodium azide.</u>   |
| Source :          | <u>Rabbit</u>  |
| Dilution :        | <u>Western Blot: 1/500 - 1/2000. Immunohistochemistry: 1/100 - 1/300. ELISA: 1/5000. Not yet tested in other applications.</u> |
| Purification :    | <u>The antibody was affinity-purified from rabbit antiserum by affinity-chromatography using epitope-specific immunogen.</u>   |
| Concentration :   | <u>1 mg/ml</u>   |
| Storage_stability | <u>-20°C/1 year</u>  |
| :                 |  |
| Msds :            | <u>MSDS_Antibody.pdf</u>   |
| Other_name :      | <u>PRKCA; PKCA; PRKACA; Protein kinase C alpha type; PKC-A; PKC-alpha</u>  |

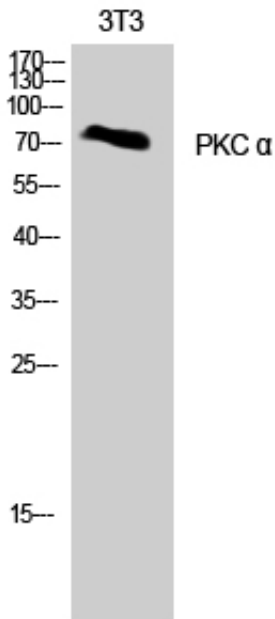


Molecular  
Weight :

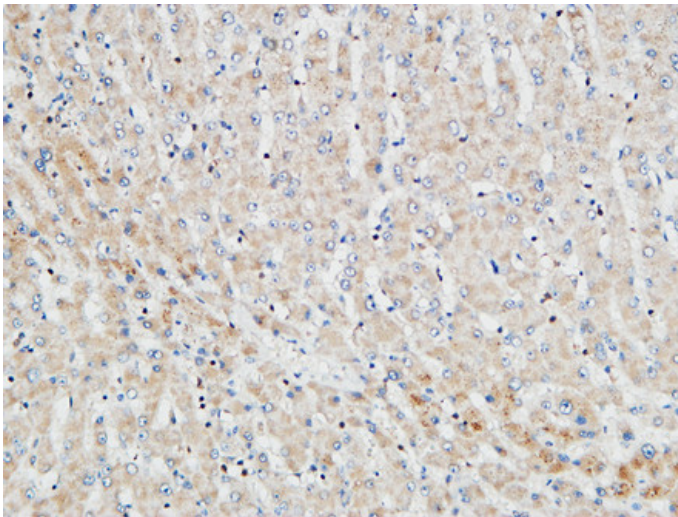
76KD

---

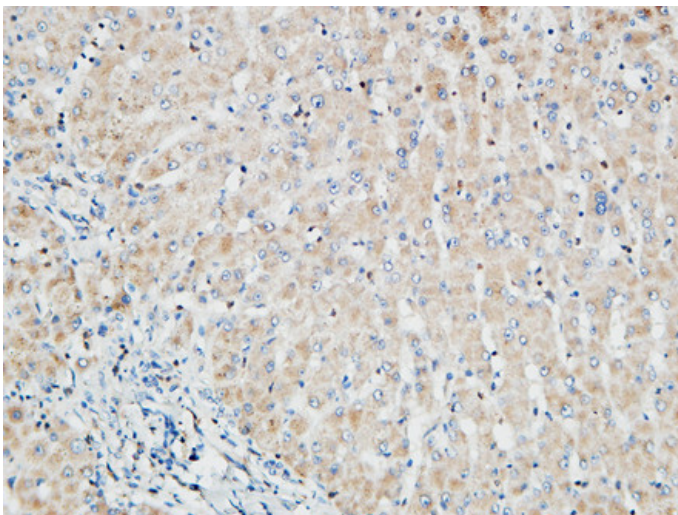
## Product Images



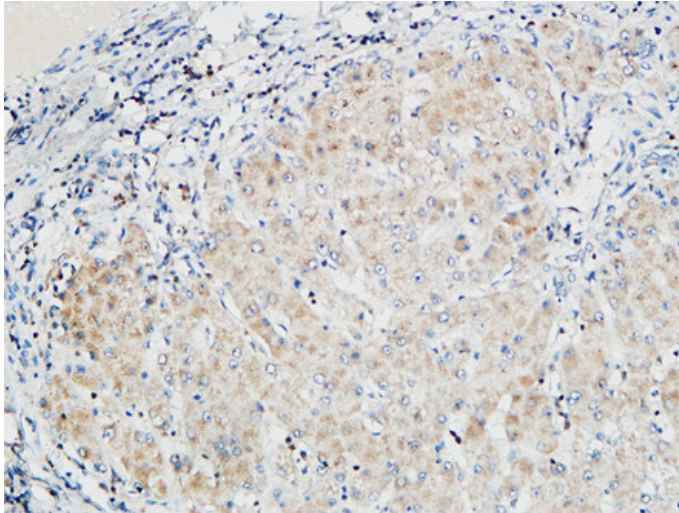
Western Blot analysis of NIH-3T3 cells using PKC  $\alpha$  Polyclonal Antibody



Immunohistochemical analysis of paraffin-embedded Human Right liver. 1, Antibody was diluted at 1:100(4°, overnight). 2, High-pressure and temperature EDTA, pH8.0 was used for antigen retrieval. 3, Secondary antibody was diluted at 1:200(room temperature, 30min).



Immunohistochemical analysis of paraffin-embedded Human Right liver. 1, Antibody was diluted at 1:100(4°, overnight). 2, High-pressure and temperature EDTA, pH8.0 was used for antigen retrieval. 3, Secondary antibody was diluted at 1:200(room temperature, 30min).



Immunohistochemical analysis of paraffin-embedded Human Right liver. 1, Antibody was diluted at 1:100(4°, overnight). 2, High-pressure and temperature EDTA, pH8.0 was used for antigen retrieval. 3, Secondary antibody was diluted at 1:200(room temperature, 30min).