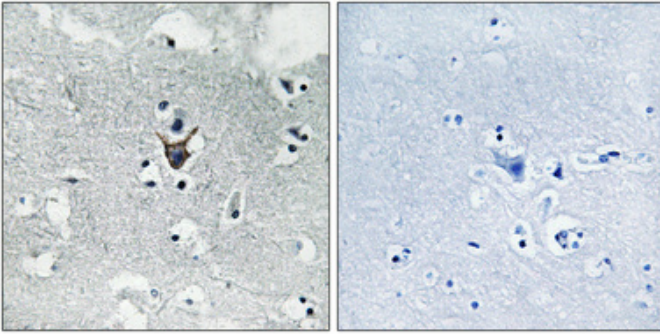


PKC  $\delta$  Polyclonal Antibody

Catalog_no :	AT3761
Applications :	WB,IHC-p,ELISA
Reactivity :	Human
Category :	抗原抗体
Size :	100 $\mu$ g/50 $\mu$ g/20 $\mu$ g
Gene_name :	PRKCD
Protein_name :	Protein kinase C delta type
Humangene_id :	<a href="#">5580</a>
Humanswissprot_no :	<a href="#">Q05655</a>
Immunogen :	The antiserum was produced against synthesized peptide derived from human PKC delta. AA range:612-661
Specificity :	PKC $\delta$ Polyclonal Antibody detects endogenous levels of PKC $\delta$ protein.
Formulation :	Liquid in PBS containing 50% glycerol, 0.5% BSA and 0.02% sodium azide.
Source :	Rabbit
Dilution :	Western Blot: 1/500 - 1/2000. Immunohistochemistry: 1/100 - 1/300. ELISA: 1/10000. Not yet tested in other applications.
Purification :	The antibody was affinity-purified from rabbit antiserum by affinity-chromatography using epitope-specific immunogen.
Concentration :	1 mg/ml
Storage_stability :	-20°C/1 year
Msds :	MSDS_Antibody.pdf
Other_name :	PRKCD; Protein kinase C delta type; Tyrosine-protein kinase PRKCD; nPKC-delta
Molecular Weight :	77KD

## Product Images



Immunohistochemical analysis of paraffin-embedded Human brain. Antibody was diluted at 1:100(4°,overnight). High-pressure and temperature Tris-EDTA,pH8.0 was used for antigen retrieval. Negative contrl (right) obtaned from antibody was pre-absorbed by immunogen peptide.