

PKC  $\epsilon$  Polyclonal Antibody

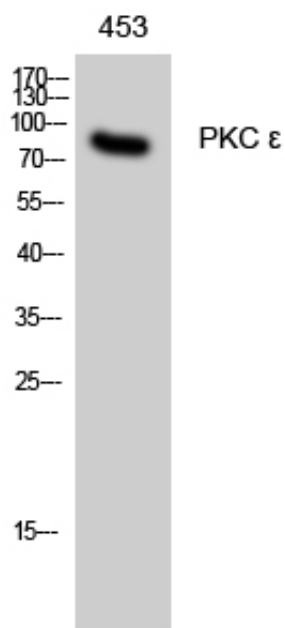
Catalog_no :	AT3763
Applications :	WB,ELISA
Reactivity :	Human,Mouse,Rat
Category :	抗原抗体
Size :	100 $\mu$ g/50 $\mu$ g/20 $\mu$ g
Gene_name :	PRKCE
Protein_name :	Protein kinase C epsilon type
Humangene_id :	<a href="#">5581</a>
Humanswissprot_no :	<a href="#">Q02156</a>
Mousegene_id :	<a href="#">18754</a>
Mouseswissprot_no :	<a href="#">P16054</a>
Ratgene_id :	<a href="#">29340</a>
Ratswissprot_no :	<a href="#">P09216</a>
Immunogen :	The antiserum was produced against synthesized peptide derived from human PKC epsilon. AA range:688-737
Specificity :	PKC $\epsilon$ Polyclonal Antibody detects endogenous levels of PKC $\epsilon$ protein.
Formulation :	Liquid in PBS containing 50% glycerol, 0.5% BSA and 0.02% sodium azide.
Source :	Rabbit
Dilution :	Western Blot: 1/500 - 1/2000. ELISA: 1/5000. Not yet tested in other applications.
Purification :	The antibody was affinity-purified from rabbit antiserum by affinity-chromatography using epitope-specific immunogen.
Concentration :	1 mg/ml
Storage_stability :	-20°C/1 year
Msds :	<a href="#">MSDS_Antibody.pdf</a>



Other\_name : PRKCE; PKCE; Protein kinase C epsilon type; nPKC-epsilon

Molecular Weight : 83KD

## Product Images



Western Blot analysis of 453 cells using PKC  $\epsilon$  Polyclonal Antibody diluted at 1 : 500