



PKC ζ Polyclonal Antibody

Catalog_no :	AT3765
Applications :	WB,IHC-p,IF,ELISA
Reactivity :	Human,Mouse,Rat,Monkey
Category :	抗原抗体
Size :	100 μ g/50 μ g/20 μ g
Gene_name :	PRKCZ
Protein_name :	Protein kinase C zeta type
Humangene_id	5590
:	
Humanswissprot	Q05513
_no :	
Mousegene_id :	18762
Mouseswissprot	Q02956
_no :	
Ratgene_id :	25522
Ratswissprot_no	P09217
:	
Immunogen :	The antiserum was produced against synthesized peptide derived from human PKC zeta. AA range:526-575
Specificity :	PKC ζ Polyclonal Antibody detects endogenous levels of PKC ζ protein.
Formulation :	Liquid in PBS containing 50% glycerol, 0.5% BSA and 0.02% sodium azide.
Source :	Rabbit
Dilution :	Western Blot: 1/500 - 1/2000. Immunohistochemistry: 1/100 - 1/300. Immunofluorescence: 1/200 - 1/1000. ELISA: 1/5000. Not yet tested in other applications.
Purification :	The antibody was affinity-purified from rabbit antiserum by affinity-chromatography using epitope-specific immunogen.
Concentration :	1 mg/ml
Storage_stability	-20°C/1 year
:	

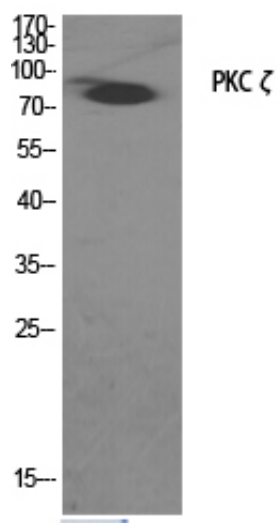


Msd : MSDS_Antibody.pdf

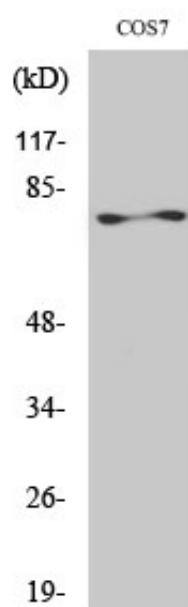
Other_name : PRKCZ; PKC2; Protein kinase C zeta type; nPKC-zeta

Molecular Weight : 80KD

Product Images



Western Blot analysis of various cells using PKC ζ
Polyclonal Antibody diluted at 1 : 2000



Western Blot analysis of COS7 cells using PKC ζ
Polyclonal Antibody diluted at 1 : 2000