

## PKD2 Polyclonal Antibody

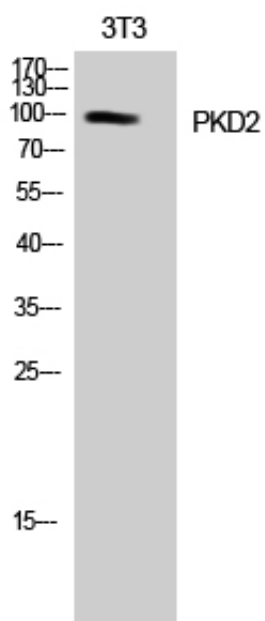
Catalog_no :	<u>AT3773</u>
Applications :	<u>WB,IHC-p,ELISA</u>
Reactivity :	<u>Human,Mouse,Rat</u>
Category :	<u>抗原抗体</u>
Size :	<u>100µg/50µg/20µg</u>
Gene_name :	<u>PRKD2</u>
Protein_name :	<u>Serine/threonine-protein kinase D2</u>
Humangene_id :	<u><a href="#">25865</a></u>
Humanswissprot_no :	<u><a href="#">Q9BZL6</a></u>
Mousegene_id :	<u><a href="#">101540</a></u>
Mouseswissprot_no :	<u><a href="#">Q8BZ03</a></u>
Ratgene_id :	<u><a href="#">292658</a></u>
Ratswissprot_no :	<u><a href="#">Q5XIS9</a></u>
Immunogen :	<u>The antiserum was produced against synthesized peptide derived from human PKD2. AA range:829-878</u>
Specificity :	<u>PKD2 Polyclonal Antibody detects endogenous levels of PKD2 protein.</u>
Formulation :	<u>Liquid in PBS containing 50% glycerol, 0.5% BSA and 0.02% sodium azide.</u>
Source :	<u>Rabbit</u>
Dilution :	<u>Western Blot: 1/500 - 1/2000. Immunohistochemistry: 1/100 - 1/300. ELISA: 1/5000. Not yet tested in other applications.</u>
Purification :	<u>The antibody was affinity-purified from rabbit antiserum by affinity-chromatography using epitope-specific immunogen.</u>
Concentration :	<u>1 mg/ml</u>
Storage_stability :	<u>-20°C/1 year</u>
Msds :	<u>MSDS_Antibody.pdf</u>



Other\_name : PRKD2; PKD2; HSPC187; Serine/threonine-protein kinase D2; nPKC-D2

Molecular Weight : 96KD

## Product Images



Western Blot analysis of NIH-3T3 cells using PKD2 Polyclonal Antibody