

## PKR1 Polyclonal Antibody

Catalog_no :	AT3782
Applications :	WB,IF,ELISA
Reactivity :	Human,Mouse,Rat
Category :	抗原抗体
Size :	100µg/50µg/20µg
Gene_name :	PROKR1
Protein_name :	Prokineticin receptor 1
Humangene_id :	<a href="#">10887</a>
Humanswissprot_no :	<a href="#">Q8TCW9</a>
Mousegene_id :	<a href="#">58182</a>
Mouseswissprot_no :	<a href="#">Q9JKL1</a>
Ratgene_id :	<a href="#">192648</a>
Ratswissprot_no :	<a href="#">Q8R416</a>
Immunogen :	The antiserum was produced against synthesized peptide derived from human PKR1. AA range:19-68
Specificity :	PKR1 Polyclonal Antibody detects endogenous levels of PKR1 protein.
Formulation :	Liquid in PBS containing 50% glycerol, 0.5% BSA and 0.02% sodium azide.
Source :	Rabbit
Dilution :	Western Blot: 1/500 - 1/2000. Immunofluorescence: 1/200 - 1/1000. ELISA: 1/20000. Not yet tested in other applications.
Purification :	The antibody was affinity-purified from rabbit antiserum by affinity-chromatography using epitope-specific immunogen.
Concentration :	1 mg/ml
Storage_stability :	-20°C/1 year
Msds :	MSDS_Antibody.pdf



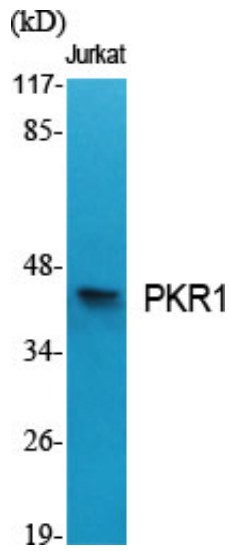
Other\_name : PROKR1; GPR73; PKR1; Prokineticin receptor 1; PK-R1; G-protein coupled receptor 73; G-protein coupled receptor ZAQ; GPR73a

---

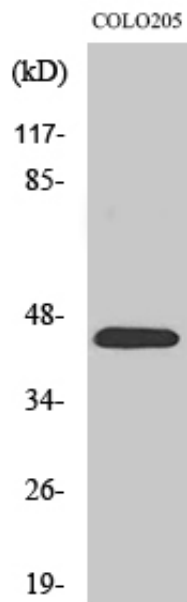
Molecular Weight : 45KD

---

## Product Images



Western Blot analysis of various cells using PKR1 Polyclonal Antibody



Western Blot analysis of COLO205 cells using PKR1 Polyclonal Antibody