

PLC γ 1 Polyclonal Antibody

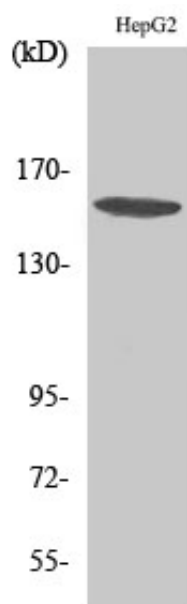
Catalog_no :	<u>AT3792</u>
Applications :	<u>WB,IHC-p,ELISA</u>
Reactivity :	<u>Human,Mouse,Rat,Monkey</u>
Category :	<u>抗原抗体</u>
Size :	<u>100μg/50μg/20μg</u>
Gene_name :	<u>PLCG1</u>
Protein_name :	<u>1-phosphatidylinositol 4,5-bisphosphate phosphodiesterase gamma-1</u>
Humangene_id :	<u>5335</u>
Humanswissprot_no :	<u>P19174</u>
Mousegene_id :	<u>18803</u>
Mouseswissprot_no :	<u>Q62077</u>
Ratgene_id :	<u>25738</u>
Ratswissprot_no :	<u>P10686</u>
Immunogen :	<u>The antiserum was produced against synthesized peptide derived from human PLCG1. AA range:736-785</u>
Specificity :	<u>PLC γ1 Polyclonal Antibody detects endogenous levels of PLC γ1 protein.</u>
Formulation :	<u>Liquid in PBS containing 50% glycerol, 0.5% BSA and 0.02% sodium azide.</u>
Source :	<u>Rabbit</u>
Dilution :	<u>Western Blot: 1/500 - 1/2000. Immunohistochemistry: 1/100 - 1/300. ELISA: 1/10000. Not yet tested in other applications.</u>
Purification :	<u>The antibody was affinity-purified from rabbit antiserum by affinity-chromatography using epitope-specific immunogen.</u>
Concentration :	<u>1 mg/ml</u>
Storage_stability :	<u>-20°C/1 year</u>
Msds :	<u>MSDS_Antibody.pdf</u>



Other_name : PLCG1; PLC1; 1-phosphatidylinositol 4; 5-bisphosphate phosphodiesterase gamma-1; PLC-148; Phosphoinositide phospholipase C-gamma-1; Phospholipase C-II; PLC-II; Phospholipase C-gamma-1; PLC-gamma-1

Molecular Weight : 150KD

Product Images



Western Blot analysis of various cells using PLC γ 1 Polyclonal Antibody diluted at 1 : 2000