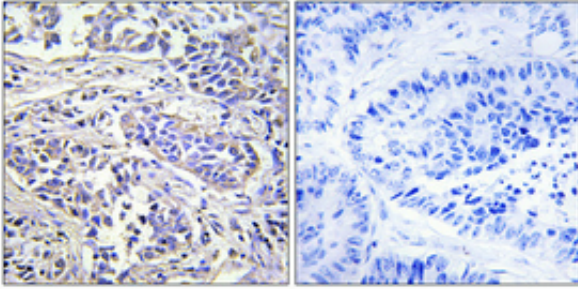


PLC-XD1 Polyclonal Antibody

Catalog_no :	AT3796
Applications :	IHC-p,ELISA
Reactivity :	Human
Category :	抗原抗体
Size :	100µg/50µg/20µg
Gene_name :	PLCXD1
Protein_name :	PI-PLC X domain-containing protein 1
Humangene_id :	55344
Humanswissprot_no :	Q9NUJ7
Immunogen :	The antiserum was produced against synthesized peptide derived from human PLCXD1. AA range:187-236
Specificity :	PLC-XD1 Polyclonal Antibody detects endogenous levels of PLC-XD1 protein.
Formulation :	Liquid in PBS containing 50% glycerol, 0.5% BSA and 0.02% sodium azide.
Source :	Rabbit
Dilution :	Immunohistochemistry: 1/100 - 1/300. ELISA: 1/40000. Not yet tested in other applications.
Purification :	The antibody was affinity-purified from rabbit antiserum by affinity-chromatography using epitope-specific immunogen.
Concentration :	1 mg/ml
Storage_stability :	-20°C/1 year
Msds :	MSDS_Antibody.pdf
Other_name :	PLCXD1; PI-PLC X domain-containing protein 1

Product Images



Immunohistochemical analysis of paraffin-embedded Human lung cancer. Antibody was diluted at 1:100(4°,overnight). High-pressure and temperature Tris-EDTA,pH8.0 was used for antigen retrieval. Negative contrl (right) obtaned from antibody was pre-absorbed by immunogen peptide.