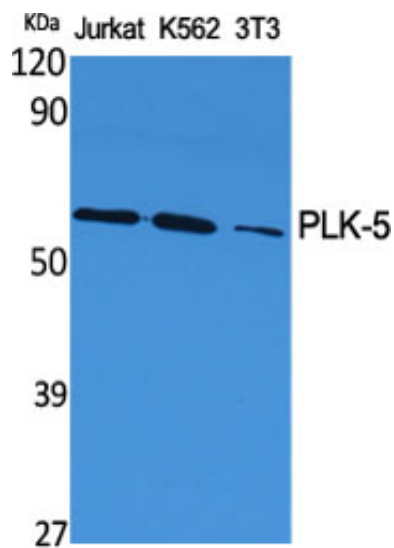


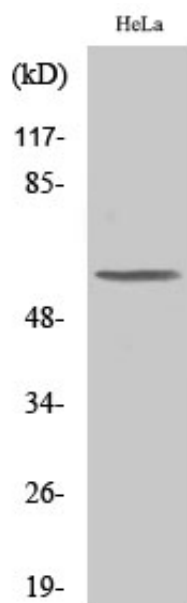
## PLK-5 Polyclonal Antibody

Catalog_no :	AT3798
Applications :	WB,ELISA
Reactivity :	Human
Category :	抗原抗体
Size :	100µg/50µg/20µg
Gene_name :	PLK5
Protein_name :	Inactive serine/threonine-protein kinase PLK5
Humangene_id :	<a href="#">126520</a>
Humanswissprot_no :	<a href="#">Q496M5</a>
Immunogen :	The antiserum was produced against synthesized peptide derived from human PLK5. AA range:131-180
Specificity :	PLK-5 Polyclonal Antibody detects endogenous levels of PLK-5 protein.
Formulation :	Liquid in PBS containing 50% glycerol, 0.5% BSA and 0.02% sodium azide.
Source :	Rabbit
Dilution :	Western Blot: 1/500 - 1/2000. ELISA: 1/10000. Not yet tested in other applications.
Purification :	The antibody was affinity-purified from rabbit antiserum by affinity-chromatography using epitope-specific immunogen.
Concentration :	1 mg/ml
Storage_stability :	-20°C/1 year
Msds :	MSDS_Antibody.pdf
Other_name :	PLK5; PLK5P; FG060302; Inactive serine/threonine-protein kinase PLK5; Polo-like kinase 5; PLK-5
Molecular Weight :	55KD

## Product Images



Western Blot analysis of various cells using PLK-5 Polyclonal Antibody



Western Blot analysis of COLO205 cells using PLK-5 Polyclonal Antibody