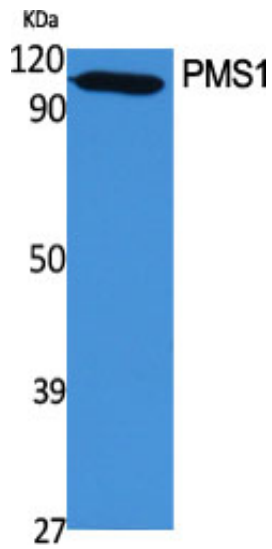




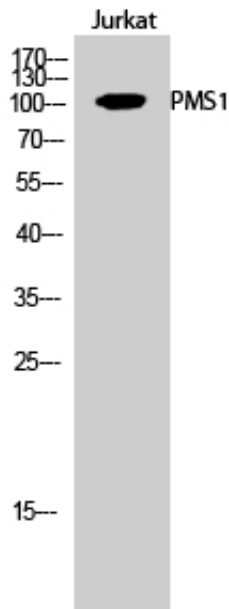
PMS1 Polyclonal Antibody

Catalog_no :	AT3803
Applications :	WB,IHC-p,ELISA
Reactivity :	Human
Category :	抗原抗体
Size :	100µg/50µg/20µg
Gene_name :	PMS1
Protein_name :	PMS1 protein homolog 1
Humangene_id :	5378
Humanswissprot_no :	P54277
Immunogen :	The antiserum was produced against synthesized peptide derived from human PMS1. AA range:441-490
Specificity :	PMS1 Polyclonal Antibody detects endogenous levels of PMS1 protein.
Formulation :	Liquid in PBS containing 50% glycerol, 0.5% BSA and 0.02% sodium azide.
Source :	Rabbit
Dilution :	Western Blot: 1/500 - 1/2000. Immunohistochemistry: 1/100 - 1/300. ELISA: 1/10000. Not yet tested in other applications.
Purification :	The antibody was affinity-purified from rabbit antiserum by affinity-chromatography using epitope-specific immunogen.
Concentration :	1 mg/ml
Storage_stability :	-20°C/1 year
Msds :	MSDS_Antibody.pdf
Other_name :	PMS1; PMSL1; PMS1 protein homolog 1; DNA mismatch repair protein PMS1
Molecular Weight :	105KD

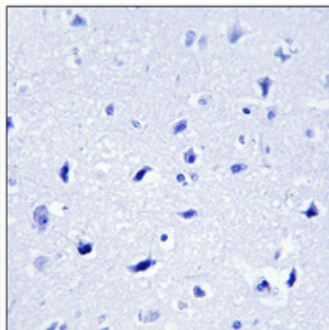
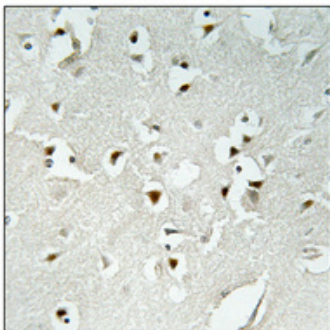
Product Images



Western Blot analysis of various cells using PMS1 Polyclonal Antibody cells nucleus extracted by Minute TM Cytoplasmic and Nuclear Fractionation kit (SC-003, Inventbiotech, MN, USA).



Western Blot analysis of Jurkat cells using PMS1 Polyclonal Antibody cells nucleus extracted by Minute TM Cytoplasmic and Nuclear Fractionation kit (SC-003, Inventbiotech, MN, USA).



Immunohistochemical analysis of paraffin-embedded Human brain. Antibody was diluted at 1:100 (4°, overnight). High-pressure and temperature Tris-EDTA, pH 8.0 was used for antigen retrieval. Negative control (right) obtained from antibody was pre-absorbed by immunogen peptide.