

PNPase Polyclonal Antibody

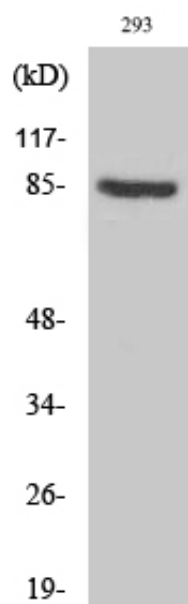
Catalog_no :	AT3807
Applications :	WB,IHC-p,ELISA
Reactivity :	Human,Mouse
Category :	抗原抗体
Size :	100µg/50µg/20µg
Gene_name :	PNPT1
Protein_name :	Polyribonucleotide nucleotidyltransferase 1 mitochondrial
Humangene_id :	87178
Humanswissprot_no :	Q8TCS8
Mousegene_id :	71701
Mouseswissprot_no :	Q8K1R3
Immunogen :	The antiserum was produced against synthesized peptide derived from human PNPT1. AA range:570-619
Specificity :	PNPase Polyclonal Antibody detects endogenous levels of PNPase protein.
Formulation :	Liquid in PBS containing 50% glycerol, 0.5% BSA and 0.02% sodium azide.
Source :	Rabbit
Dilution :	Western Blot: 1/500 - 1/2000. Immunohistochemistry: 1/100 - 1/300. ELISA: 1/20000. Not yet tested in other applications.
Purification :	The antibody was affinity-purified from rabbit antiserum by affinity-chromatography using epitope-specific immunogen.
Concentration :	1 mg/ml
Storage_stability :	-20°C/1 year
Msds :	MSDS_Antibody.pdf
Other_name :	PNPT1; PNPASE; Polyribonucleotide nucleotidyltransferase 1; mitochondrial; 3'-5' RNA exonuclease OLD35; PNPase old-35; Polynucleotide phosphorylase 1; PNPase 1; Polynucleotide phosphorylase-like protein



Molecular
Weight :

85KD

Product Images



Western Blot analysis of various cells using PNPase Polyclonal Antibody diluted at 1 : 1000