

POLR2E Polyclonal Antibody

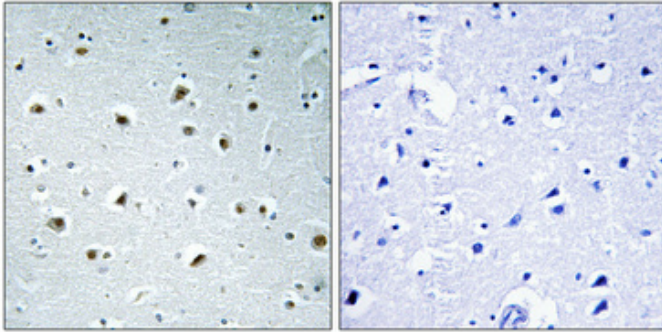
Catalog_no :	AT3811
Applications :	WB,IHC-p,ELISA
Reactivity :	Human,Mouse,Rat
Category :	抗原抗体
Size :	100µg/50µg/20µg
Gene_name :	POLR2E
Protein_name :	DNA-directed RNA polymerases I, II, and III subunit RPABC1
Humangene_id	5434
:	
Humanswissprot	P19388
_no :	
Mousegene_id :	66420
Mouseswissprot	Q80UW8
_no :	
Ratgene_id :	690966
Ratswissprot_no	B0BNE2
:	
Immunogen :	The antiserum was produced against synthesized peptide derived from human RPAB1. AA range:21-70
Specificity :	POLR2E Polyclonal Antibody detects endogenous levels of POLR2E protein.
Formulation :	Liquid in PBS containing 50% glycerol, 0.5% BSA and 0.02% sodium azide.
Source :	Rabbit
Dilution :	Western Blot: 1/500 - 1/2000. Immunohistochemistry: 1/100 - 1/300. ELISA: 1/40000. Not yet tested in other applications.
Purification :	The antibody was affinity-purified from rabbit antiserum by affinity-chromatography using epitope-specific immunogen.
Concentration :	1 mg/ml
Storage_stability	-20°C/1 year
:	
Msds :	MSDS_Antibody.pdf



Other_name : POLR2E; DNA-directed RNA polymerases I; II, and III subunit RPABC1; RNA polymerases I, II, and III subunit ABC1; DNA-directed RNA polymerase II 23 kDa polypeptide; DNA-directed RNA polymerase II subunit E; RPB5 homolog; XAP4

Molecular Weight : 25KD

Product Images



Immunohistochemical analysis of paraffin-embedded Human brain. Antibody was diluted at 1:100(4°,overnight). High-pressure and temperature Tris-EDTA,pH8.0 was used for antigen retrieval. Negative contrl (right) obtaned from antibody was pre-absorbed by immunogen peptide.