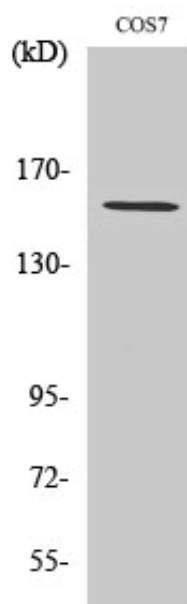


## POLR3A Polyclonal Antibody

Catalog_no :	AT3813
Applications :	WB,IHC-p,ELISA
Reactivity :	Human,Mouse,Monkey
Category :	抗原抗体
Size :	100µg/50µg/20µg
Gene_name :	POLR3A
Protein_name :	DNA-directed RNA polymerase III subunit RPC1
Humangene_id :	<a href="#">11128</a>
Humanswissprot_no :	<a href="#">O14802</a>
Immunogen :	The antiserum was produced against synthesized peptide derived from human RPC1. AA range:31-80
Specificity :	POLR3A Polyclonal Antibody detects endogenous levels of POLR3A protein.
Formulation :	Liquid in PBS containing 50% glycerol, 0.5% BSA and 0.02% sodium azide.
Source :	Rabbit
Dilution :	Western Blot: 1/500 - 1/2000. Immunohistochemistry: 1/100 - 1/300. ELISA: 1/40000. Not yet tested in other applications.
Purification :	The antibody was affinity-purified from rabbit antiserum by affinity-chromatography using epitope-specific immunogen.
Concentration :	1 mg/ml
Storage_stability :	-20°C/1 year
Msds :	MSDS_Antibody.pdf
Other_name :	POLR3A; DNA-directed RNA polymerase III subunit RPC1; RNA polymerase III subunit C1; DNA-directed RNA polymerase III largest subunit; DNA-directed RNA polymerase III subunit A; RNA polymerase III 155 kDa subunit; RPC155; RNA polymerase III
Molecular Weight :	156KD

## Product Images



Western Blot analysis of various cells using POLR3A Polyclonal Antibody cells nucleus extracted by Minute TM Cytoplasmic and Nuclear Fractionation kit (SC-003, Inventbiotech, MN, USA).