



## POLR3B Polyclonal Antibody

Catalog_no :	AT3814
Applications :	WB,IHC-p,ELISA
Reactivity :	Human,Mouse,Rat
Category :	抗原抗体
Size :	100µg/50µg/20µg
Gene_name :	POLR3B
Protein_name :	DNA-directed RNA polymerase III subunit RPC2
Humangene_id :	<a href="#">55703</a>
Humanswissprot_no :	<a href="#">Q9NW08</a>
Mousegene_id :	<a href="#">70428</a>
Mouseswissprot_no :	<a href="#">P59470</a>
Immunogen :	The antiserum was produced against synthesized peptide derived from human POLR3B. AA range:321-370
Specificity :	POLR3B Polyclonal Antibody detects endogenous levels of POLR3B protein.
Formulation :	Liquid in PBS containing 50% glycerol, 0.5% BSA and 0.02% sodium azide.
Source :	Rabbit
Dilution :	Western Blot: 1/500 - 1/2000. Immunohistochemistry: 1/100 - 1/300. ELISA: 1/20000. Not yet tested in other applications.
Purification :	The antibody was affinity-purified from rabbit antiserum by affinity-chromatography using epitope-specific immunogen.
Concentration :	1 mg/ml
Storage_stability :	-20°C/1 year
Msds :	<a href="#">MSDS_Antibody.pdf</a>
Other_name :	POLR3B; DNA-directed RNA polymerase III subunit RPC2; RNA polymerase III subunit C2; C128; DNA-directed RNA polymerase III 127.6 kDa polypeptide; DNA-directed RNA polymerase III subunit B

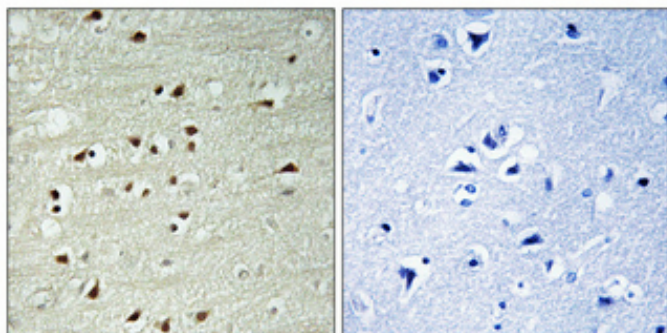


Molecular  
Weight :

128KD

---

## Product Images



Immunohistochemical analysis of paraffin-embedded Human brain. Antibody was diluted at 1:100(4°,overnight). High-pressure and temperature Tris-EDTA,pH8.0 was used for antigen retrieval. Negative contrl (right) obtaned from antibody was pre-absorbed by immunogen peptide.