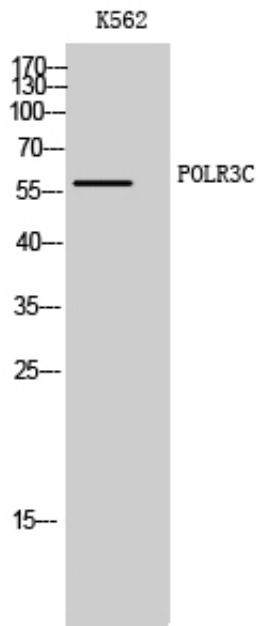


POLR3C Polyclonal Antibody

Catalog_no :	AT3815
Applications :	WB,ELISA
Reactivity :	Human
Category :	抗原抗体
Size :	100µg/50µg/20µg
Gene_name :	POLR3C
Protein_name :	DNA-directed RNA polymerase III subunit RPC3
Humangene_id :	10623
Humanswissprot_no :	Q9BUJ4
Immunogen :	The antiserum was produced against synthesized peptide derived from human RPC3. AA range:191-240
Specificity :	POLR3C Polyclonal Antibody detects endogenous levels of POLR3C protein.
Formulation :	Liquid in PBS containing 50% glycerol, 0.5% BSA and 0.02% sodium azide.
Source :	Rabbit
Dilution :	Western Blot: 1/500 - 1/2000. ELISA: 1/40000. Not yet tested in other applications.
Purification :	The antibody was affinity-purified from rabbit antiserum by affinity-chromatography using epitope-specific immunogen.
Concentration :	1 mg/ml
Storage_stability :	-20°C/1 year
Msds :	MSDS_Antibody.pdf
Other_name :	POLR3C; DNA-directed RNA polymerase III subunit RPC3; RNA polymerase III subunit C3; DNA-directed RNA polymerase III subunit C; RNA polymerase III 62 kDa subunit; RPC62
Molecular Weight :	60KD

Product Images



Western Blot analysis of K562 cells using POLR3C Polyclonal Antibody cells nucleus extracted by Minute TM Cytoplasmic and Nuclear Fractionation kit (SC-003, Inventbiotech, MN, USA).