

POLR3E Polyclonal Antibody

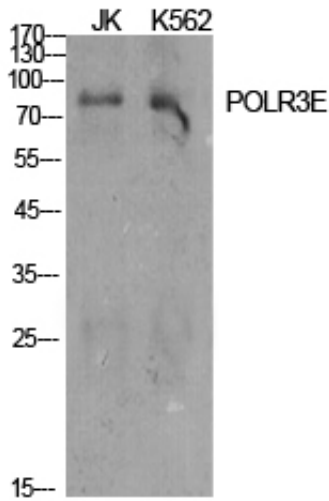
Catalog_no :	AT3817
Applications :	WB,IHC-p,IF,ELISA
Reactivity :	Human,Mouse
Category :	抗原抗体
Size :	100µg/50µg/20µg
Gene_name :	POLR3E
Protein_name :	DNA-directed RNA polymerase III subunit RPC5
Humangene_id :	55718
Humanswissprot_no :	Q9NVU0
Mousegene_id :	26939
Mouseswissprot_no :	Q9CZT4
Immunogen :	The antiserum was produced against synthesized peptide derived from human RPC5. AA range:191-240
Specificity :	POLR3E Polyclonal Antibody detects endogenous levels of POLR3E protein.
Formulation :	Liquid in PBS containing 50% glycerol, 0.5% BSA and 0.02% sodium azide.
Source :	Rabbit
Dilution :	Western Blot: 1/500 - 1/2000. Immunohistochemistry: 1/100 - 1/300. Immunofluorescence: 1/200 - 1/1000. ELISA: 1/40000. Not yet tested in other applications.
Purification :	The antibody was affinity-purified from rabbit antiserum by affinity-chromatography using epitope-specific immunogen.
Concentration :	1 mg/ml
Storage_stability :	-20°C/1 year
Msds :	MSDS_Antibody.pdf
Other_name :	POLR3E; KIAA1452; DNA-directed RNA polymerase III subunit RPC5; RNA polymerase III subunit C5; DNA-directed RNA polymerase III 80 kDa polypeptide



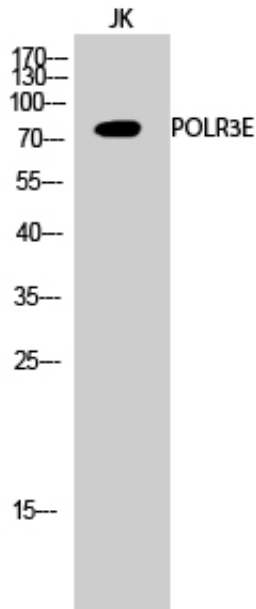
Molecular
Weight :

80KD

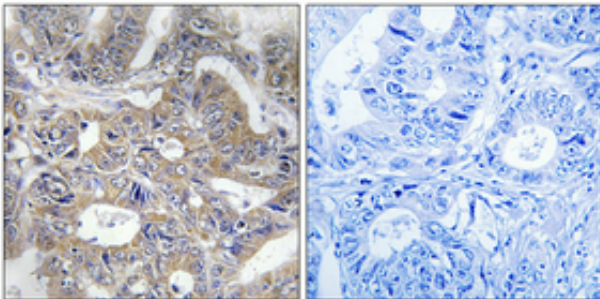
Product Images



Western Blot analysis of various cells using POLR3E Polyclonal Antibody cells nucleus extracted by Minute TM Cytoplasmic and Nuclear Fractionation kit (SC-003, Inventbiotech, MN, USA).



Western Blot analysis of JK cells using POLR3E Polyclonal Antibody cells nucleus extracted by Minute TM Cytoplasmic and Nuclear Fractionation kit (SC-003, Inventbiotech, MN, USA).



Immunohistochemical analysis of paraffin-embedded Human colon cancer. Antibody was diluted at 1:100 (4°, overnight). High-pressure and temperature Tris-EDTA, pH 8.0 was used for antigen retrieval. Negative control (right) obtained from antibody was pre-absorbed by immunogen peptide.