

## POM121 Polyclonal Antibody

Catalog_no :	<u>AT3819</u>
Applications :	<u>WB,IHC-p,ELISA</u>
Reactivity :	<u>Human,Mouse,Rat</u>
Category :	<u>抗原抗体</u>
Size :	<u>100µg/50µg/20µg</u>
Gene_name :	<u>POM121</u>
Protein_name :	<u>Nuclear envelope pore membrane protein POM 121</u>
Humangene_id :	<u><a href="#">9883</a></u>
Humanswissprot_no :	<u><a href="#">Q96HA1/A6NF01/A8CG34</a></u>
Mousegene_id :	<u><a href="#">107939</a></u>
Ratgene_id :	<u><a href="#">113975</a></u>
Ratswissprot_no :	<u><a href="#">P52591</a></u>
Immunogen :	<u>The antiserum was produced against synthesized peptide derived from human POM121. AA range:1197-1246</u>
Specificity :	<u>POM121 Polyclonal Antibody detects endogenous levels of POM121 protein.</u>
Formulation :	<u>Liquid in PBS containing 50% glycerol, 0.5% BSA and 0.02% sodium azide.</u>
Source :	<u>Rabbit</u>
Dilution :	<u>Western Blot: 1/500 - 1/2000. Immunohistochemistry: 1/100 - 1/300. ELISA: 1/40000. Not yet tested in other applications.</u>
Purification :	<u>The antibody was affinity-purified from rabbit antiserum by affinity-chromatography using epitope-specific immunogen.</u>
Concentration :	<u>1 mg/ml</u>
Storage_stability :	<u>-20°C/1 year</u>
Msds :	<u><a href="#">MSDS_Antibody.pdf</a></u>
Other_name :	<u>POM121; KIAA0618; NUP121; POM121A; Nuclear envelope pore membrane protein POM 121; Nuclear envelope pore membrane protein POM 121A; Nucleoporin Nup121;</u>



Pore membrane protein of 121 kDa; POM121B; Putative nuclear envelope pore membrane prote

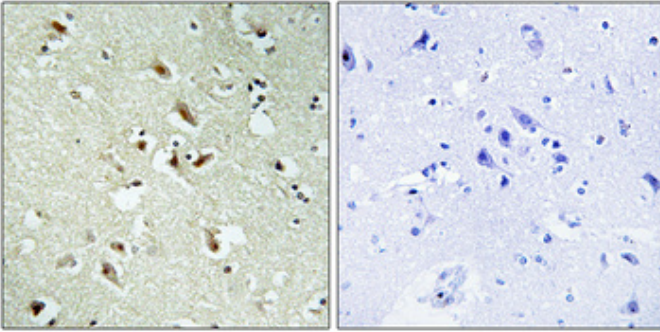
---

Molecular  
Weight :

125KD

---

## Product Images



Immunohistochemical analysis of paraffin-embedded Human brain. Antibody was diluted at 1:100(4°,overnight). High-pressure and temperature Tris-EDTA,pH8.0 was used for antigen retrieval. Negative contrl (right) obtaned from antibody was pre-absorbed by immunogen peptide.