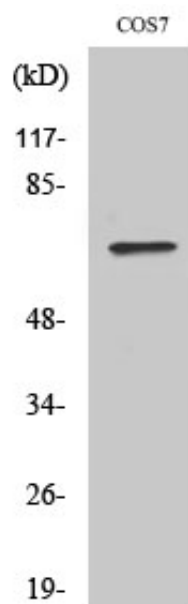


POT1 Polyclonal Antibody

Catalog_no :	AT3820
Applications :	WB,ELISA
Reactivity :	Human,Monkey
Category :	抗原抗体
Size :	100µg/50µg/20µg
Gene_name :	POT1
Protein_name :	Protection of telomeres protein 1
Humangene_id :	25913
Humanswissprot_no :	Q9NUX5
Immunogen :	The antiserum was produced against synthesized peptide derived from human POT1. AA range:247-296
Specificity :	POT1 Polyclonal Antibody detects endogenous levels of POT1 protein.
Formulation :	Liquid in PBS containing 50% glycerol, 0.5% BSA and 0.02% sodium azide.
Source :	Rabbit
Dilution :	Western Blot: 1/500 - 1/2000. ELISA: 1/10000. Not yet tested in other applications.
Purification :	The antibody was affinity-purified from rabbit antiserum by affinity-chromatography using epitope-specific immunogen.
Concentration :	1 mg/ml
Storage_stability :	-20°C/1 year
Msds :	MSDS_Antibody.pdf
Other_name :	POT1; Protection of telomeres protein 1; hPot1; POT1-like telomere end-binding protein
Molecular Weight :	70KD

Product Images



Western Blot analysis of various cells using POT1 Polyclonal Antibody cells nucleus extracted by Minute TM Cytoplasmic and Nuclear Fractionation kit (SC-003, Inventbiotech, MN, USA).