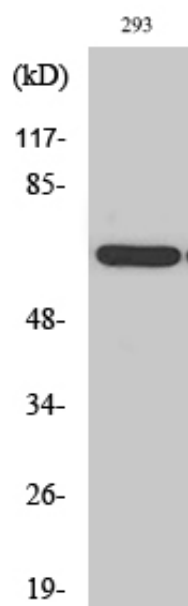




## POTE14/22 Polyclonal Antibody

Catalog_no :	AT3821
Applications :	WB,IHC-p,ELISA
Reactivity :	Human
Category :	抗原抗体
Size :	100µg/50µg/20µg
Gene_name :	POTEG
Protein_name :	POTE ankyrin domain family member G
Humangene_id :	<a href="#">404785/23784</a>
Humanswissprot_no :	<a href="#">Q6S5H5/Q6S545/A6NI47</a>
Immunogen :	The antiserum was produced against synthesized peptide derived from human POTEG. AA range:401-450
Specificity :	POTE14/22 Polyclonal Antibody detects endogenous levels of POTE14/22 protein.
Formulation :	Liquid in PBS containing 50% glycerol, 0.5% BSA and 0.02% sodium azide.
Source :	Rabbit
Dilution :	Western Blot: 1/500 - 1/2000. Immunohistochemistry: 1/100 - 1/300. ELISA: 1/40000. Not yet tested in other applications.
Purification :	The antibody was affinity-purified from rabbit antiserum by affinity-chromatography using epitope-specific immunogen.
Concentration :	1 mg/ml
Storage_stability :	-20°C/1 year
Msds :	MSDS_Antibody.pdf
Other_name :	POTEG; A26C2; POTE14; POTE ankyrin domain family member G; ANKRD26-like family C member 2; Prostate; ovary, testis-expressed protein on chromosome 14; POTE-14; POTEH; A26C3; ACTBL1; POTE22; POTE ankyrin domain family member H; ANKRD26-like
Molecular Weight :	67KD

Product Images



Western Blot analysis of various cells using POTE14/22 Polyclonal Antibody