

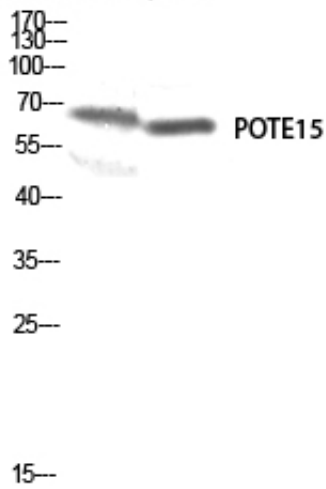


POTE15 Polyclonal Antibody

Catalog_no :	AT3823
Applications :	WB,IHC-p,ELISA
Reactivity :	Human
Category :	抗原抗体
Size :	100µg/50µg/20µg
Gene_name :	POTEB
Protein_name :	POTE ankyrin domain family member B
Humangene_id :	339010
Humanswissprot_no :	Q6S5H4
Immunogen :	The antiserum was produced against synthesized peptide derived from human A26B1. AA range:481-530
Specificity :	POTE15 Polyclonal Antibody detects endogenous levels of POTE15 protein.
Formulation :	Liquid in PBS containing 50% glycerol, 0.5% BSA and 0.02% sodium azide.
Source :	Rabbit
Dilution :	Western Blot: 1/500 - 1/2000. Immunohistochemistry: 1/100 - 1/300. ELISA: 1/5000. Not yet tested in other applications.
Purification :	The antibody was affinity-purified from rabbit antiserum by affinity-chromatography using epitope-specific immunogen.
Concentration :	1 mg/ml
Storage_stability :	-20°C/1 year
Msds :	MSDS_Antibody.pdf
Other_name :	POTEB; A26B1; POTE15; POTE ankyrin domain family member B; ANKRD26-like family B member 1; Prostate; ovary, testis-expressed protein on chromosome 15; POTE-15
Molecular Weight :	60KD

Product Images

Mouse-kidney 3T3



Western blot analysis of Mouse-kidney 3T3 lysis using POTE15 antibody. Antibody was diluted at 1:500