

PP2A-A β Polyclonal Antibody

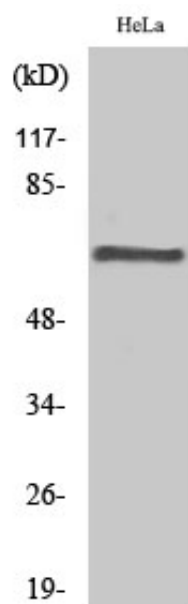
Catalog_no :	<u>AT3826</u>
Applications :	<u>WB,IHC-p,ELISA</u>
Reactivity :	<u>Human,Mouse,Rat</u>
Category :	<u>抗原抗体</u>
Size :	<u>100μg/50μg/20μg</u>
Gene_name :	<u>PPP2R1B</u>
Protein_name :	<u>Serine/threonine-protein phosphatase 2A 65 kDa regulatory subunit A beta isoform</u>
Humangene_id :	<u>5519</u>
Humanswissprot_no :	<u>P30154</u>
Mousegene_id :	<u>73699</u>
Mouseswissprot_no :	<u>Q7TNP2</u>
Ratgene_id :	<u>315648</u>
Ratswissprot_no :	<u>Q4QQT4</u>
Immunogen :	<u>The antiserum was produced against synthesized peptide derived from human PPP2R1B. AA range:552-601</u>
Specificity :	<u>PP2A-Aβ Polyclonal Antibody detects endogenous levels of PP2A-Aβ protein.</u>
Formulation :	<u>Liquid in PBS containing 50% glycerol, 0.5% BSA and 0.02% sodium azide.</u>
Source :	<u>Rabbit</u>
Dilution :	<u>Western Blot: 1/500 - 1/2000.IHC-p:1:50-300 ELISA: 1/20000. Not yet tested in other applications.</u>
Purification :	<u>The antibody was affinity-purified from rabbit antiserum by affinity-chromatography using epitope-specific immunogen.</u>
Concentration :	<u>1 mg/ml</u>
Storage_stability :	<u>-20°C/1 year</u>
Msds :	<u>MSDS_Antibody.pdf</u>



Other_name : PPP2R1B; Serine/threonine-protein phosphatase 2A 65 kDa regulatory subunit A beta isoform; PP2A subunit A isoform PR65-beta; PP2A subunit A isoform R1-beta

Molecular Weight : 66KD

Product Images



Western Blot analysis of various cells using PP2A-A β Polyclonal Antibody