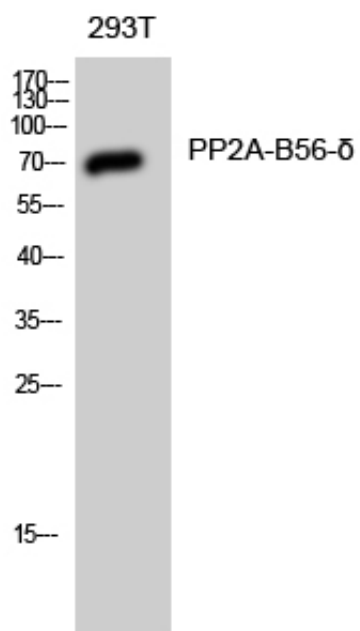


PP2A-B56- δ Polyclonal Antibody

Catalog_no :	AT3829
Applications :	WB,IHC-p,ELISA
Reactivity :	Human,Mouse,Rat
Category :	抗原抗体
Size :	100 μ g/50 μ g/20 μ g
Gene_name :	PPP2R5D
Protein_name :	Serine/threonine-protein phosphatase 2A 56 kDa regulatory subunit delta isoform
Humangene_id :	5528
Humanswissprot_no :	Q14738
Immunogen :	The antiserum was produced against synthesized peptide derived from human PPP2R5D. AA range:544-593
Specificity :	PP2A-B56- δ Polyclonal Antibody detects endogenous levels of PP2A-B56- δ protein.
Formulation :	Liquid in PBS containing 50% glycerol, 0.5% BSA and 0.02% sodium azide.
Source :	Rabbit
Dilution :	Western Blot: 1/500 - 1/2000. Immunohistochemistry: 1/100 - 1/300. ELISA: 1/10000. Not yet tested in other applications.
Purification :	The antibody was affinity-purified from rabbit antiserum by affinity-chromatography using epitope-specific immunogen.
Concentration :	1 mg/ml
Storage_stability :	-20°C/1 year
Msds :	MSDS_Antibody.pdf
Other_name :	PPP2R5D; Serine/threonine-protein phosphatase 2A 56 kDa regulatory subunit delta isoform; PP2A B subunit isoform B'-delta; PP2A B subunit isoform B56-delta; PP2A B subunit isoform PR61-delta; PP2A B subunit isoform R5-delta
Molecular Weight :	70KD

Product Images



Western Blot analysis of 293T cells using PP2A-B56- δ
Polyclonal Antibody diluted at 1 : 1000