

PP2A-C $\alpha$  Polyclonal Antibody

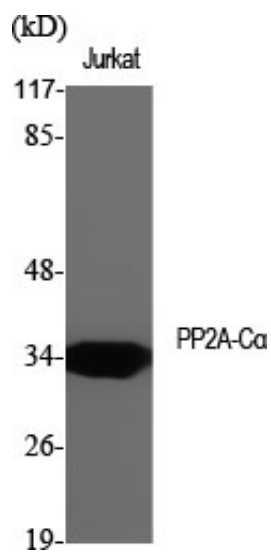
Catalog_no :	AT3830
Applications :	WB,IHC-p,IF,ELISA
Reactivity :	Human,Mouse,Rat
Category :	抗原抗体
Size :	100 $\mu$ g/50 $\mu$ g/20 $\mu$ g
Gene_name :	PPP2CA
Protein_name :	Serine/threonine-protein phosphatase 2A catalytic subunit alpha isoform
Humangene_id :	<a href="#">5515</a>
Humanswissprot_no :	<a href="#">P67775</a>
Mousegene_id :	<a href="#">19052</a>
Mouseswissprot_no :	<a href="#">P63330</a>
Ratgene_id :	<a href="#">24672</a>
Ratswissprot_no :	<a href="#">P63331</a>
Immunogen :	The antiserum was produced against synthesized peptide derived from human PP2A-alpha. AA range:260-309
Specificity :	PP2A-C $\alpha$ Polyclonal Antibody detects endogenous levels of PP2A-C $\alpha$ protein.
Formulation :	Liquid in PBS containing 50% glycerol, 0.5% BSA and 0.02% sodium azide.
Source :	Rabbit
Dilution :	Western Blot: 1/500 - 1/2000. Immunohistochemistry: 1/100 - 1/300. Immunofluorescence: 1/200 - 1/1000. ELISA: 1/5000. Not yet tested in other applications.
Purification :	The antibody was affinity-purified from rabbit antiserum by affinity-chromatography using epitope-specific immunogen.
Concentration :	1 mg/ml
Storage_stability :	-20°C/1 year



---

MsdS :	<u>MSDS_Antibody.pdf</u>
Other_name :	<u>PPP2CA; Serine/threonine-protein phosphatase 2A catalytic subunit alpha isoform; PP2A-alpha; Replication protein C; RP-C</u>
Molecular Weight :	<u>35KD</u>

## Product Images

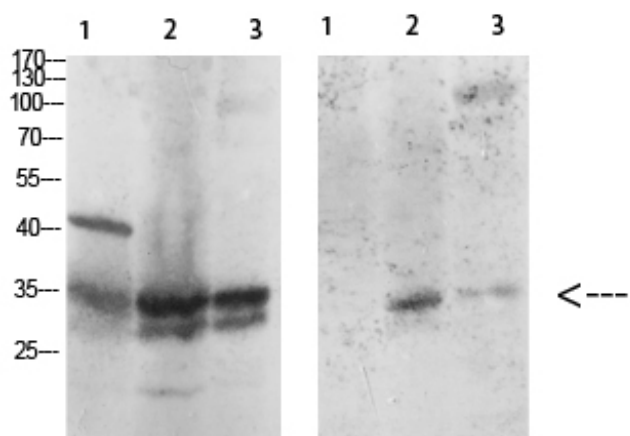


Western Blot analysis of various cells using PP2A-Cα Polyclonal Antibody diluted at 1 : 2000



Western Blot analysis of A549 cells using PP2A-Cα Polyclonal Antibody diluted at 1 : 2000

Western Blot analysis of various cells using Antibody diluted at 1:1000. Secondary antibody was diluted at 1:20000



15-- PP2A-C $\alpha$  PP2A-C $\alpha$  p-Tyr307  
1 mouse-kidney  
2 HeLa-UV  
3 HeLa