



PP2Cε Polyclonal Antibody

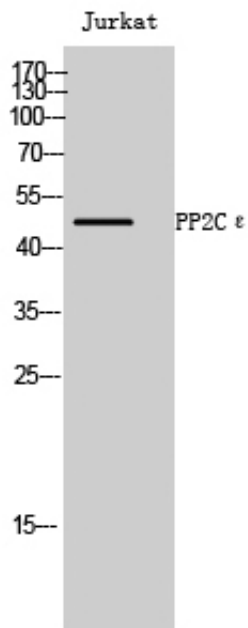
Catalog_no :	AT3831
Applications :	WB,ELISA
Reactivity :	Human,Mouse,Rat
Category :	抗原抗体
Size :	100μg/50μg/20μg
Gene_name :	PPM1L
Protein_name :	Protein phosphatase 1L
Humangene_id :	151742
Humanswissprot_no :	Q5SGD2
Mousegene_id :	242083
Mouseswissprot_no :	Q8BHN0
Immunogen :	The antiserum was produced against synthesized peptide derived from human PPM1L. AA range:119-168
Specificity :	PP2Cε Polyclonal Antibody detects endogenous levels of PP2Cε protein.
Formulation :	Liquid in PBS containing 50% glycerol, 0.5% BSA and 0.02% sodium azide.
Source :	Rabbit
Dilution :	Western Blot: 1/500 - 1/2000. ELISA: 1/10000. Not yet tested in other applications.
Purification :	The antibody was affinity-purified from rabbit antiserum by affinity-chromatography using epitope-specific immunogen.
Concentration :	1 mg/ml
Storage_stability :	-20°C/1 year
Msds :	MSDS_Antibody.pdf
Other_name :	PPM1L; PP2CE; Protein phosphatase 1L; Protein phosphatase 1-like; Protein phosphatase 2C isoform epsilon; PP2C-epsilon
Molecular Weight :	48KD



专注二抗产品

Biodragon旗下品牌

Product Images



Western Blot analysis of Jurkat cells using PP2C ϵ Polyclonal Antibody