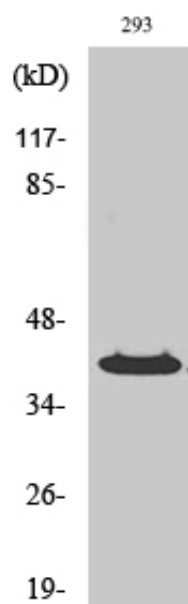




PP2C κ Polyclonal Antibody

Catalog_no :	AT3832
Applications :	WB,IHC-p,ELISA
Reactivity :	Human
Category :	抗原抗体
Size :	100 μ g/50 μ g/20 μ g
Gene_name :	PPM1K
Protein_name :	Protein phosphatase 1K mitochondrial
Humangene_id :	152926
Humanswissprot_no :	Q8N3J5
Immunogen :	The antiserum was produced against synthesized peptide derived from human PPM1K. AA range:205-254
Specificity :	PP2C κ Polyclonal Antibody detects endogenous levels of PP2C κ protein.
Formulation :	Liquid in PBS containing 50% glycerol, 0.5% BSA and 0.02% sodium azide.
Source :	Rabbit
Dilution :	Western Blot: 1/500 - 1/2000. Immunohistochemistry: 1/100 - 1/300. ELISA: 1/40000. Not yet tested in other applications.
Purification :	The antibody was affinity-purified from rabbit antiserum by affinity-chromatography using epitope-specific immunogen.
Concentration :	1 mg/ml
Storage_stability :	-20°C/1 year
Msds :	MSDS_Antibody.pdf
Other_name :	PPM1K; PP2CM; Protein phosphatase 1K; mitochondrial; PP2C domain-containing protein phosphatase 1K; PP2C-like mitochondrial protein; PP2C-type mitochondrial phosphoprotein phosphatase; PTMP; Protein phosphatase 2C isoform kappa; PP2C-kappa
Molecular Weight :	45KD

Product Images



Western Blot analysis of various cells using PP2Ck Polyclonal Antibody