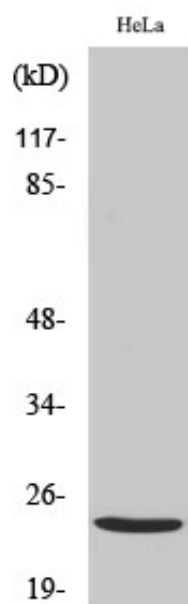


## PPP1R14D Polyclonal Antibody

Catalog_no :	AT3837
Applications :	WB,IHC-p,ELISA
Reactivity :	Human
Category :	抗原抗体
Size :	100µg/50µg/20µg
Gene_name :	PPP1R14D
Protein_name :	Protein phosphatase 1 regulatory subunit 14D
Humangene_id :	<a href="#">54866</a>
Humanswissprot_no :	<a href="#">Q9NXH3</a>
Immunogen :	The antiserum was produced against synthesized peptide derived from human PPP1R14D. AA range:66-115
Specificity :	PPP1R14D Polyclonal Antibody detects endogenous levels of PPP1R14D protein.
Formulation :	Liquid in PBS containing 50% glycerol, 0.5% BSA and 0.02% sodium azide.
Source :	Rabbit
Dilution :	Western Blot: 1/500 - 1/2000. Immunohistochemistry: 1/100 - 1/300. ELISA: 1/5000. Not yet tested in other applications.
Purification :	The antibody was affinity-purified from rabbit antiserum by affinity-chromatography using epitope-specific immunogen.
Concentration :	1 mg/ml
Storage_stability :	-20°C/1 year
Msds :	MSDS_Antibody.pdf
Other_name :	PPP1R14D; GBPI; Protein phosphatase 1 regulatory subunit 14D; Gastrointestinal and brain-specific PP1-inhibitory protein 1; GBPI-1
Molecular Weight :	24KD

## Product Images



Western Blot analysis of various cells using PPP1R14D Polyclonal Antibody