



## PPP2R3C Polyclonal Antibody

Catalog_no :	AT3841
Applications :	WB,ELISA
Reactivity :	Human,Mouse,Rat
Category :	抗原抗体
Size :	100µg/50µg/20µg
Gene_name :	PPP2R3C
Protein_name :	Serine/threonine-protein phosphatase 2A regulatory subunit B" subunit gamma
Humangene_id :	<a href="#">55012</a>
Humanswissprot_no :	<a href="#">Q969Q6</a>
Mousegene_id :	<a href="#">59032</a>
Mouseswissprot_no :	<a href="#">Q9JK24</a>
Ratgene_id :	<a href="#">362739</a>
Ratswissprot_no :	<a href="#">Q6AXZ3</a>
Immunogen :	The antiserum was produced against synthesized peptide derived from human PPP2R3C. AA range:165-214
Specificity :	PPP2R3C Polyclonal Antibody detects endogenous levels of PPP2R3C protein.
Formulation :	Liquid in PBS containing 50% glycerol, 0.5% BSA and 0.02% sodium azide.
Source :	Rabbit
Dilution :	Western Blot: 1/500 - 1/2000. ELISA: 1/20000. Not yet tested in other applications.
Purification :	The antibody was affinity-purified from rabbit antiserum by affinity-chromatography using epitope-specific immunogen.
Concentration :	1 mg/ml
Storage_stability :	-20°C/1 year
Msds :	<a href="#">MSDS_Antibody.pdf</a>



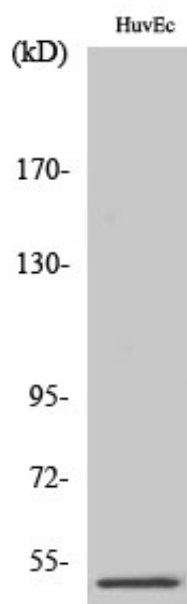
Other\_name : PPP2R3C; C14orf10; G5PR; Serine/threonine-protein phosphatase 2A regulatory subunit B'' subunit gamma; Protein phosphatase subunit G5PR; Rhabdomyosarcoma antigen MU-RMS-40.6A/6C

---

Molecular Weight : 55KD

---

## Product Images



Western Blot analysis of various cells using PPP2R3C Polyclonal Antibody