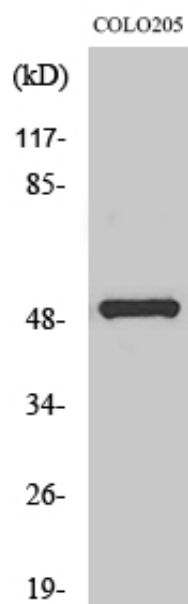




PPP4R1L Polyclonal Antibody

Catalog_no :	AT3842
Applications :	WB,ELISA
Reactivity :	Human,Monkey
Category :	抗原抗体
Size :	100µg/50µg/20µg
Gene_name :	PPP4R1L
Protein_name :	Putative serine/threonine-protein phosphatase 4 regulatory subunit 1-like
Humangene_id :	55370
Humanswissprot_no :	Q9P1A2
Immunogen :	The antiserum was produced against synthesized peptide derived from human PPP4R1L. AA range:191-240
Specificity :	PPP4R1L Polyclonal Antibody detects endogenous levels of PPP4R1L protein.
Formulation :	Liquid in PBS containing 50% glycerol, 0.5% BSA and 0.02% sodium azide.
Source :	Rabbit
Dilution :	Western Blot: 1/500 - 1/2000. ELISA: 1/10000. Not yet tested in other applications.
Purification :	The antibody was affinity-purified from rabbit antiserum by affinity-chromatography using epitope-specific immunogen.
Concentration :	1 mg/ml
Storage_stability :	-20°C/1 year
Msds :	MSDS_Antibody.pdf
Other_name :	PPP4R1L; C20orf192; Putative serine/threonine-protein phosphatase 4 regulatory subunit 1-like
Molecular Weight :	50KD

Product Images



Western Blot analysis of various cells using PPP4R1L Polyclonal Antibody