



## PRAF2 Polyclonal Antibody

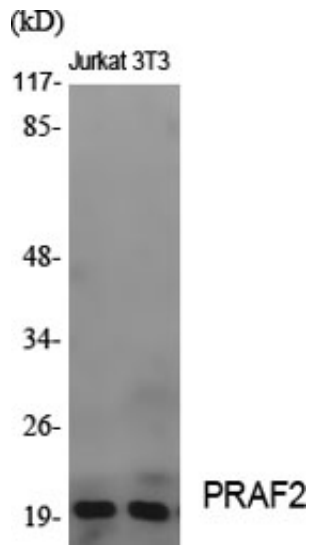
Catalog_no :	AT3847
Applications :	WB,IHC-p,IF,ELISA
Reactivity :	Human,Mouse,Rat
Category :	抗原抗体
Size :	100µg/50µg/20µg
Gene_name :	PRAF2
Protein_name :	PRA1 family protein 2
Humangene_id :	<a href="#">11230</a>
Humanswissprot_no :	<a href="#">O60831</a>
Mousegene_id :	<a href="#">54637</a>
Mouseswissprot_no :	<a href="#">Q9JIG8</a>
Immunogen :	The antiserum was produced against synthesized peptide derived from human JM4. AA range:129-178
Specificity :	PRAF2 Polyclonal Antibody detects endogenous levels of PRAF2 protein.
Formulation :	Liquid in PBS containing 50% glycerol, 0.5% BSA and 0.02% sodium azide.
Source :	Rabbit
Dilution :	Western Blot: 1/500 - 1/2000. Immunohistochemistry: 1/100 - 1/300. Immunofluorescence: 1/200 - 1/1000. ELISA: 1/40000. Not yet tested in other applications.
Purification :	The antibody was affinity-purified from rabbit antiserum by affinity-chromatography using epitope-specific immunogen.
Concentration :	1 mg/ml
Storage_stability :	-20°C/1 year
Msds :	<a href="#">MSDS_Antibody.pdf</a>
Other_name :	PRAF2; JM4; PRA1 family protein 2
Molecular	20KD



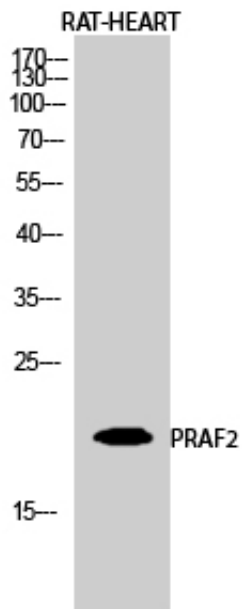
Weight :

---

## Product Images



Western Blot analysis of various cells using PRAF2  
Polyclonal Antibody diluted at 1 : 2000



Western Blot analysis of RAT-HEART cells using PRAF2  
Polyclonal Antibody diluted at 1 : 2000