

Presenilin 1 Polyclonal Antibody

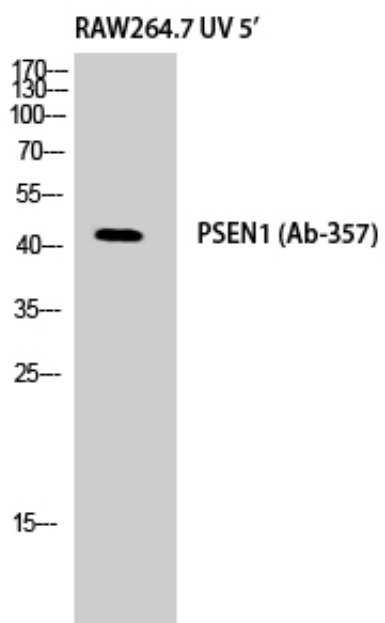
Catalog_no :	<u>AT3856</u>
Applications :	<u>WB,IHC-p,ELISA</u>
Reactivity :	<u>Human,Mouse,Rat</u>
Category :	<u>抗原抗体</u>
Size :	<u>100µg/50µg/20µg</u>
Gene_name :	<u>PSEN1</u>
Protein_name :	<u>Presenilin-1</u>
Humangene_id :	<u>5663</u>
Humanswissprot_no :	<u>P49768</u>
Mousegene_id :	<u>19164</u>
Mouseswissprot_no :	<u>P49769</u>
Ratgene_id :	<u>29192</u>
Ratswissprot_no :	<u>P97887</u>
Immunogen :	<u>The antiserum was produced against synthesized peptide derived from human PSEN1. AA range:323-372</u>
Specificity :	<u>Presenilin 1 Polyclonal Antibody detects endogenous levels of Presenilin 1 protein.</u>
Formulation :	<u>Liquid in PBS containing 50% glycerol, 0.5% BSA and 0.02% sodium azide.</u>
Source :	<u>Rabbit</u>
Dilution :	<u>Western Blot: 1/500 - 1/2000. Immunohistochemistry: 1/100 - 1/300. ELISA: 1/5000. Not yet tested in other applications.</u>
Purification :	<u>The antibody was affinity-purified from rabbit antiserum by affinity-chromatography using epitope-specific immunogen.</u>
Concentration :	<u>1 mg/ml</u>
Storage_stability :	<u>-20°C/1 year</u>
Msds :	<u>MSDS_Antibody.pdf</u>



Other_name : PSEN1; AD3; PS1; PSNL1; Presenilin-1; PS-1; Protein S182

Molecular Weight : 43KD

Product Images



Western Blot analysis of RAW264.7 UV 5' cells using Presenilin 1 Polyclonal Antibody