

PRP19 Polyclonal Antibody

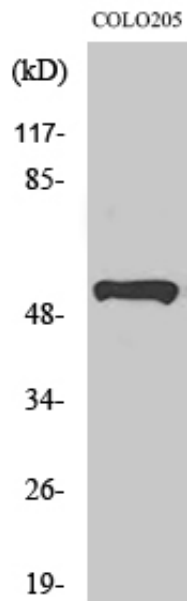
Catalog_no :	AT3864
Applications :	WB,IHC-p,ELISA
Reactivity :	Human,Mouse,Rat
Category :	抗原抗体
Size :	100µg/50µg/20µg
Gene_name :	PRPF19
Protein_name :	Pre-mRNA-processing factor 19
Humangene_id :	27339
Humanswissprot_no :	Q9UMS4
Mousegene_id :	28000
Mouseswissprot_no :	Q99KP6
Ratgene_id :	246216
Ratswissprot_no :	Q9JMJ4
Immunogen :	The antiserum was produced against synthesized peptide derived from human PRPF19. AA range:171-220
Specificity :	PRP19 Polyclonal Antibody detects endogenous levels of PRP19 protein.
Formulation :	Liquid in PBS containing 50% glycerol, 0.5% BSA and 0.02% sodium azide.
Source :	Rabbit
Dilution :	Western Blot: 1/500 - 1/2000. Immunohistochemistry: 1/100 - 1/300. ELISA: 1/40000. Not yet tested in other applications.
Purification :	The antibody was affinity-purified from rabbit antiserum by affinity-chromatography using epitope-specific immunogen.
Concentration :	1 mg/ml
Storage_stability :	-20°C/1 year
Msds :	MSDS_Antibody.pdf



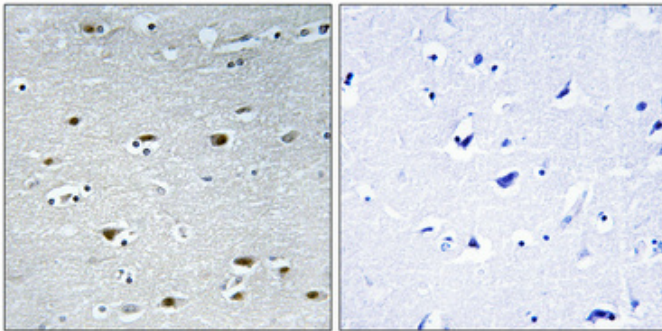
Other_name : PRPF19; NMP200; PRP19; SNEV; Pre-mRNA-processing factor 19; Nuclear matrix protein 200; PRP19/PSO4 homolog; hPso4; Senescence evasion factor

Molecular Weight : 50KD

Product Images



Western Blot analysis of various cells using PRP19 Polyclonal Antibody



Immunohistochemical analysis of paraffin-embedded Human brain. Antibody was diluted at 1:100(4°,overnight). High-pressure and temperature Tris-EDTA,pH8.0 was used for antigen retrieval. Negative contrl (right) obtaned from antibody was pre-absorbed by immunogen peptide.