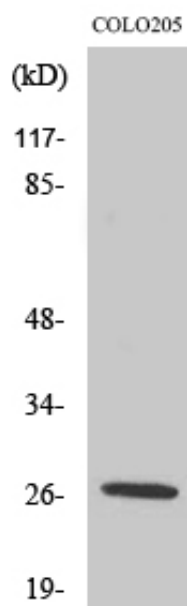




PRSS33 Polyclonal Antibody

Catalog_no :	AT3871
Applications :	WB,IHC-p,ELISA
Reactivity :	Human
Category :	抗原抗体
Size :	100µg/50µg/20µg
Gene_name :	PRSS33
Protein_name :	Serine protease 33
Humangene_id :	260429
Humanswissprot_no :	Q8NF86
Immunogen :	The antiserum was produced against synthesized peptide derived from human PRSS33. AA range:18-67
Specificity :	PRSS33 Polyclonal Antibody detects endogenous levels of PRSS33 protein.
Formulation :	Liquid in PBS containing 50% glycerol, 0.5% BSA and 0.02% sodium azide.
Source :	Rabbit
Dilution :	Western Blot: 1/500 - 1/2000. Immunohistochemistry: 1/100 - 1/300. ELISA: 1/10000. Not yet tested in other applications.
Purification :	The antibody was affinity-purified from rabbit antiserum by affinity-chromatography using epitope-specific immunogen.
Concentration :	1 mg/ml
Storage_stability :	-20°C/1 year
Msds :	MSDS_Antibody.pdf
Other_name :	PRSS33; Serine protease 33; Serine protease EOS
Molecular Weight :	26KD

Product Images



Western Blot analysis of various cells using PRSS33 Polyclonal Antibody