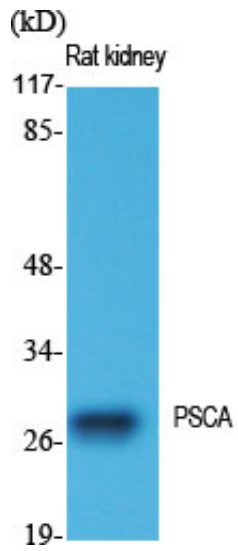


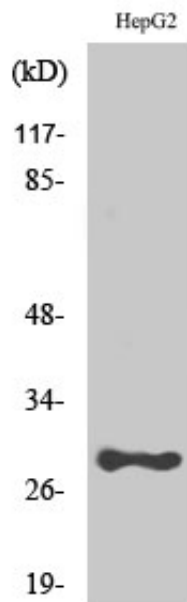
PSCA Polyclonal Antibody

Catalog_no :	AT3877
Applications :	WB,ELISA
Reactivity :	Human,Mouse
Category :	抗原抗体
Size :	100µg/50µg/20µg
Gene_name :	PSCA
Protein_name :	Prostate stem cell antigen
Humangene_id :	8000
Humanswissprot_no :	O43653
Mouseswissprot_no :	P57096
Immunogen :	The antiserum was produced against synthesized peptide derived from human Prostate Stem Cell Antigen. AA range:41-90
Specificity :	PSCA Polyclonal Antibody detects endogenous levels of PSCA protein.
Formulation :	Liquid in PBS containing 50% glycerol, 0.5% BSA and 0.02% sodium azide.
Source :	Rabbit
Dilution :	Western Blot: 1/500 - 1/2000. ELISA: 1/20000. Not yet tested in other applications.
Purification :	The antibody was affinity-purified from rabbit antiserum by affinity-chromatography using epitope-specific immunogen.
Concentration :	1 mg/ml
Storage_stability :	-20°C/1 year
Msds :	MSDS_Antibody.pdf
Other_name :	PSCA; Prostate stem cell antigen
Molecular Weight :	29KD

Product Images



Western Blot analysis of various cells using PSCA
Polyclonal Antibody diluted at 1 : 1000



Western Blot analysis of HepG2 cells using PSCA
Polyclonal Antibody diluted at 1 : 1000