



PSK-H1 Polyclonal Antibody

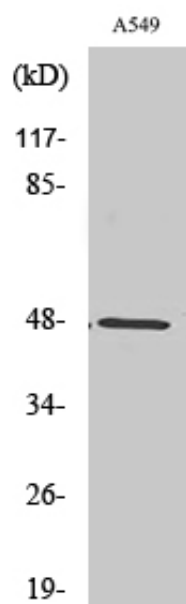
Catalog_no :	AT3883
Applications :	WB,IHC-p,ELISA
Reactivity :	Human,Mouse
Category :	抗原抗体
Size :	100µg/50µg/20µg
Gene_name :	PSKH1
Protein_name :	Serine/threonine-protein kinase H1
Humangene_id :	5681
Humanswissprot_no :	P11801
Mousegene_id :	244631
Mouseswissprot_no :	Q91YA2
Immunogen :	The antiserum was produced against synthesized peptide derived from human KPSH1. AA range:261-310
Specificity :	PSK-H1 Polyclonal Antibody detects endogenous levels of PSK-H1 protein.
Formulation :	Liquid in PBS containing 50% glycerol, 0.5% BSA and 0.02% sodium azide.
Source :	Rabbit
Dilution :	Western Blot: 1/500 - 1/2000. Immunohistochemistry: 1/100 - 1/300. ELISA: 1/20000. Not yet tested in other applications.
Purification :	The antibody was affinity-purified from rabbit antiserum by affinity-chromatography using epitope-specific immunogen.
Concentration :	1 mg/ml
Storage_stability :	-20°C/1 year
Msds :	MSDS_Antibody.pdf
Other_name :	PSKH1; Serine/threonine-protein kinase H1; Protein serine kinase H1; PSK-H1
Molecular Weight :	48KD



专注二抗产品

Biodragon旗下品牌

Product Images



Western Blot analysis of various cells using PSK-H1 Polyclonal Antibody