



PSMC6 Polyclonal Antibody

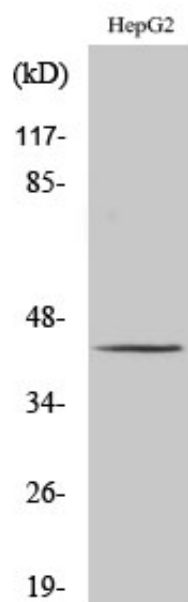
Catalog_no :	AT3885
Applications :	WB,ELISA
Reactivity :	Human,Mouse
Category :	抗原抗体
Size :	100µg/50µg/20µg
Gene_name :	PSMC6
Protein_name :	26S protease regulatory subunit 10B
Humangene_id :	5706
Humanswissprot_no :	P62333
Mousegene_id :	67089
Mouseswissprot_no :	P62334
Immunogen :	The antiserum was produced against synthesized peptide derived from human PSMC6. AA range:61-110
Specificity :	PSMC6 Polyclonal Antibody detects endogenous levels of PSMC6 protein.
Formulation :	Liquid in PBS containing 50% glycerol, 0.5% BSA and 0.02% sodium azide.
Source :	Rabbit
Dilution :	Western Blot: 1/500 - 1/2000. ELISA: 1/40000. Not yet tested in other applications.
Purification :	The antibody was affinity-purified from rabbit antiserum by affinity-chromatography using epitope-specific immunogen.
Concentration :	1 mg/ml
Storage_stability :	-20°C/1 year
Msds :	MSDS_Antibody.pdf
Other_name :	PSMC6; SUG2; 26S protease regulatory subunit 10B; 26S proteasome AAA-ATPase subunit RPT4; Proteasome 26S subunit ATPase 6; Proteasome subunit p42
Molecular Weight :	44KD



专注二抗产品

Biodragon旗下品牌

Product Images



Western Blot analysis of various cells using PSMC6 Polyclonal Antibody