

## PSMD2 Polyclonal Antibody

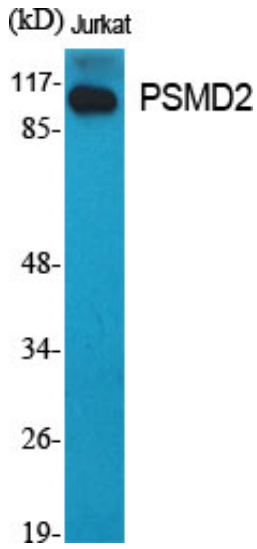
Catalog_no :	AT3888
Applications :	WB,IHC-p,ELISA
Reactivity :	Human,Mouse,Rat
Category :	抗原抗体
Size :	100µg/50µg/20µg
Gene_name :	PSMD2
Protein_name :	26S proteasome non-ATPase regulatory subunit 2
Humangene_id :	<a href="#">5708</a>
Humanswissprot_no :	<a href="#">Q13200</a>
Mousegene_id :	<a href="#">21762</a>
Mouseswissprot_no :	<a href="#">Q8VDM4</a>
Ratgene_id :	<a href="#">287984</a>
Ratswissprot_no :	<a href="#">Q4FZT9</a>
Immunogen :	The antiserum was produced against synthesized peptide derived from human PSMD2. AA range:101-150
Specificity :	PSMD2 Polyclonal Antibody detects endogenous levels of PSMD2 protein.
Formulation :	Liquid in PBS containing 50% glycerol, 0.5% BSA and 0.02% sodium azide.
Source :	Rabbit
Dilution :	Western Blot: 1/500 - 1/2000. Immunohistochemistry: 1/100 - 1/300. ELISA: 1/20000. Not yet tested in other applications.
Purification :	The antibody was affinity-purified from rabbit antiserum by affinity-chromatography using epitope-specific immunogen.
Concentration :	1 mg/ml
Storage_stability :	-20°C/1 year
Msds :	MSDS_Antibody.pdf



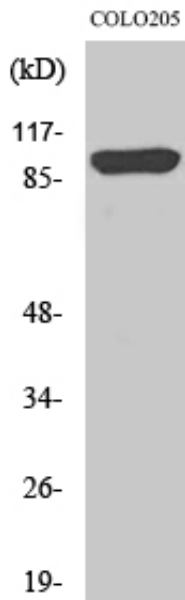
Other\_name : PSMD2; TRAP2; 26S proteasome non-ATPase regulatory subunit 2; 26S proteasome regulatory subunit RPN1; 26S proteasome regulatory subunit S2; 26S proteasome subunit p97; Protein 55.11; Tumor necrosis factor type 1 receptor-associated protein

Molecular Weight : 100KD

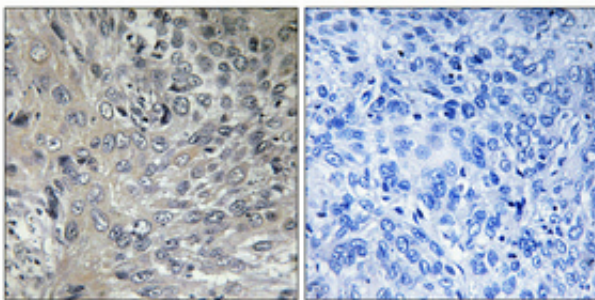
## Product Images



Western Blot analysis of various cells using PSMD2 Polyclonal Antibody



Western Blot analysis of 293 cells using PSMD2 Polyclonal Antibody



Immunohistochemical analysis of paraffin-embedded Human cervix cancer. Antibody was diluted at 1:100(4°, overnight). High-pressure and temperature Tris-EDTA, pH8.0 was used for antigen retrieval. Negative contrl (right) obtained from antibody was pre-absorbed by immunogen peptide.