

PTH/PTHrP-R Polyclonal Antibody

Catalog_no :	AT3898
Applications :	WB,IHC-p,IF,ELISA
Reactivity :	Human,Mouse,Rat
Category :	抗原抗体
Size :	100µg/50µg/20µg
Gene_name :	PTH1R
Protein_name :	Parathyroid hormone/parathyroid hormone-related peptide receptor
Humangene_id	5745
:	
Humanswissprot	Q03431
_no :	
Mousegene_id :	19228
Mouseswissprot	P41593
_no :	
Ratgene_id :	56813
Ratswissprot_no	P25961
:	
Immunogen :	The antiserum was produced against synthesized peptide derived from human PTHR1. AA range:145-194
Specificity :	PTH/PTHrP-R Polyclonal Antibody detects endogenous levels of PTH/PTHrP-R protein.
Formulation :	Liquid in PBS containing 50% glycerol, 0.5% BSA and 0.02% sodium azide.
Source :	Rabbit
Dilution :	Western Blot: 1/500 - 1/2000. Immunohistochemistry: 1/100 - 1/300. Immunofluorescence: 1/200 - 1/1000. ELISA: 1/10000. Not yet tested in other applications.
Purification :	The antibody was affinity-purified from rabbit antiserum by affinity-chromatography using epitope-specific immunogen.
Concentration :	1 mg/ml
Storage_stability	-20°C/1 year
:	

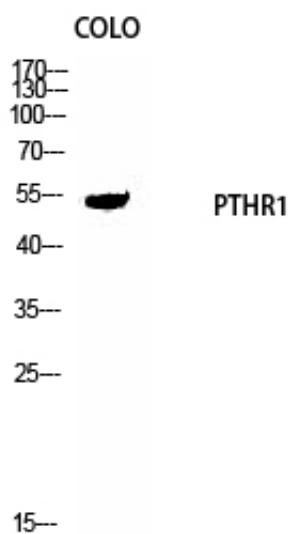


MsdS : [MSDS_Antibody.pdf](#)

Other_name : PTH1R; PTHR; PTHR1; Parathyroid hormone/parathyroid hormone-related peptide receptor; PTH/PTHrP type I receptor; PTH/PTHr receptor; Parathyroid hormone 1 receptor; PTH1 receptor

Molecular Weight : 52KD

Product Images



Western Blot analysis of COLO cells using PTH/PTHrP-R Polyclonal Antibody diluted at 1 : 1000