

## PTP1B Polyclonal Antibody

Catalog_no :	AT3900
Applications :	WB,IHC-p,ELISA
Reactivity :	Human,Mouse,Rat,Monkey
Category :	抗原抗体
Size :	100µg/50µg/20µg
Gene_name :	PTPN1
Protein_name :	Tyrosine-protein phosphatase non-receptor type 1
Humangene_id :	<a href="#">5770</a>
Humanswissprot_no :	<a href="#">P18031</a>
Mousegene_id :	<a href="#">19246</a>
Mouseswissprot_no :	<a href="#">P35821</a>
Ratgene_id :	<a href="#">24697</a>
Ratswissprot_no :	<a href="#">P20417</a>
Immunogen :	The antiserum was produced against synthesized peptide derived from human PTP1B. AA range:16-65
Specificity :	PTP1B Polyclonal Antibody detects endogenous levels of PTP1B protein.
Formulation :	Liquid in PBS containing 50% glycerol, 0.5% BSA and 0.02% sodium azide.
Source :	Rabbit
Dilution :	Western Blot: 1/500 - 1/2000. Immunohistochemistry: 1/100 - 1/300. ELISA: 1/20000. Not yet tested in other applications.
Purification :	The antibody was affinity-purified from rabbit antiserum by affinity-chromatography using epitope-specific immunogen.
Concentration :	1 mg/ml
Storage_stability :	-20°C/1 year
Msds :	MSDS_Antibody.pdf



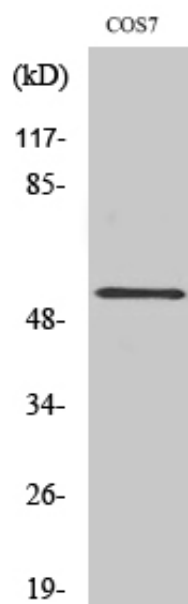
Other\_name : PTPN1; PTP1B; Tyrosine-protein phosphatase non-receptor type 1; Protein-tyrosine phosphatase 1B; PTP-1B

---

Molecular Weight : 49KD

---

## Product Images



Western Blot analysis of various cells using PTP1B Polyclonal Antibody diluted at 1 : 500