

PTP ζ Polyclonal Antibody

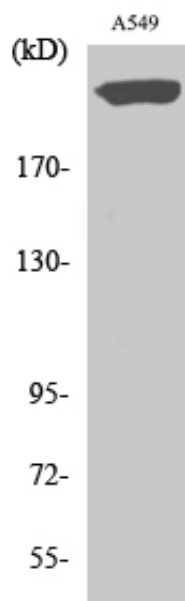
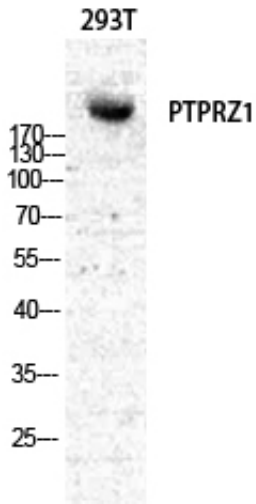
Catalog_no :	AT3903
Applications :	WB,ELISA
Reactivity :	Human,Mouse,Rat
Category :	抗原抗体
Size :	100 μ g/50 μ g/20 μ g
Gene_name :	PTPRZ1
Protein_name :	Receptor-type tyrosine-protein phosphatase zeta
Humangene_id :	5803
Humanswissprot_no :	P23471
Ratgene_id :	25613
Ratswissprot_no :	Q62656
Immunogen :	The antiserum was produced against synthesized peptide derived from human PTPRZ1. AA range:122-171
Specificity :	PTP ζ Polyclonal Antibody detects endogenous levels of PTP ζ protein.
Formulation :	Liquid in PBS containing 50% glycerol, 0.5% BSA and 0.02% sodium azide.
Source :	Rabbit
Dilution :	Western Blot: 1/500 - 1/2000. ELISA: 1/5000. Not yet tested in other applications.
Purification :	The antibody was affinity-purified from rabbit antiserum by affinity-chromatography using epitope-specific immunogen.
Concentration :	1 mg/ml
Storage_stability :	-20°C/1 year
Msds :	MSDS_Antibody.pdf
Other_name :	PTPRZ1; HTPZP2; PTPRZ; PTPRZ2; PTPZ; Receptor-type tyrosine-protein phosphatase zeta; R-PTP-zeta; Protein-tyrosine phosphatase receptor type Z polypeptide 1; Protein-tyrosine phosphatase receptor type Z polypeptide 2; R-PTP-zeta-2
Molecular	250KD



Weight :

Product Images

Western Blot analysis of various cells using PTP ζ Polyclonal Antibody diluted at 1 : 500



Western Blot analysis of A549 cells using PTP ζ Polyclonal Antibody diluted at 1 : 500