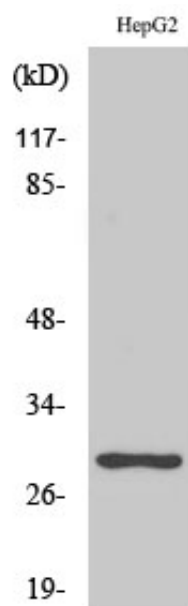


PTTG1/2/3 Polyclonal Antibody

Catalog_no :	AT3904
Applications :	WB,IHC-p,IF,ELISA
Reactivity :	Human
Category :	抗原抗体
Size :	100µg/50µg/20µg
Gene_name :	PTTG1
Protein_name :	Securin
Humangene_id :	9232
Humanswissprot_no :	O95997
Immunogen :	The antiserum was produced against synthesized peptide derived from human PTTG1. AA range:111-160
Specificity :	PTTG1/2/3 Polyclonal Antibody detects endogenous levels of PTTG1/2/3 protein.
Formulation :	Liquid in PBS containing 50% glycerol, 0.5% BSA and 0.02% sodium azide.
Source :	Rabbit
Dilution :	Western Blot: 1/500 - 1/2000. Immunohistochemistry: 1/100 - 1/300. Immunofluorescence: 1/200 - 1/1000. ELISA: 1/20000. Not yet tested in other applications.
Purification :	The antibody was affinity-purified from rabbit antiserum by affinity-chromatography using epitope-specific immunogen.
Concentration :	1 mg/ml
Storage_stability :	-20°C/1 year
Msds :	MSDS_Antibody.pdf
Other_name :	PTTG1; EAP1; PTTG; TUTR1; Securin; Esp1-associated protein; Pituitary tumor-transforming gene 1 protein; Tumor-transforming protein 1; hPTTG
Molecular Weight :	30KD

Product Images



Western Blot analysis of various cells using PTTG1/2/3 Polyclonal Antibody diluted at 1 : 1000