



PU.1 Polyclonal Antibody

Catalog_no :	AT3906
Applications :	WB,IHC-p,IF,ELISA
Reactivity :	Human,Mouse,Rat,Monkey
Category :	抗原抗体
Size :	100µg/50µg/20µg
Gene_name :	SPI1
Protein_name :	Transcription factor PU.1
Humangene_id :	6688
Humanswissprot_no :	P17947
Mousegene_id :	20375
Mouseswissprot_no :	P17433
Ratgene_id :	366126
Ratswissprot_no :	Q6BDS1
Immunogen :	The antiserum was produced against synthesized peptide derived from human SPI1. AA range:181-230
Specificity :	PU.1 Polyclonal Antibody detects endogenous levels of PU.1 protein.
Formulation :	Liquid in PBS containing 50% glycerol, 0.5% BSA and 0.02% sodium azide.
Source :	Rabbit
Dilution :	Western Blot: 1/500 - 1/2000. Immunohistochemistry: 1/100 - 1/300. Immunofluorescence: 1/200 - 1/1000. ELISA: 1/40000. Not yet tested in other applications.
Purification :	The antibody was affinity-purified from rabbit antiserum by affinity-chromatography using epitope-specific immunogen.
Concentration :	1 mg/ml
Storage_stability :	-20°C/1 year

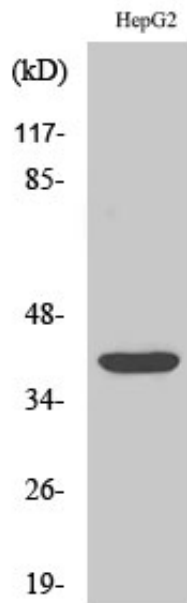


MsdS : MSDS_Antibody.pdf

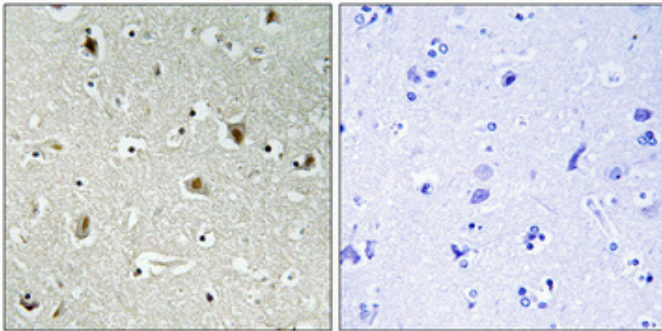
Other_name : SPI1; Transcription factor PU.1; 31 kDa-transforming protein

Molecular Weight : 32KD

Product Images



Western Blot analysis of various cells using PU.1 Polyclonal Antibody cells nucleus extracted by Minute TM Cytoplasmic and Nuclear Fractionation kit (SC-003, Inventbiotech, MN, USA).



Immunohistochemical analysis of paraffin-embedded Human brain. Antibody was diluted at 1:100 (4°, overnight). High-pressure and temperature Tris-EDTA, pH 8.0 was used for antigen retrieval. Negative control (right) obtained from antibody was pre-absorbed by immunogen peptide.