

PUMA Polyclonal Antibody

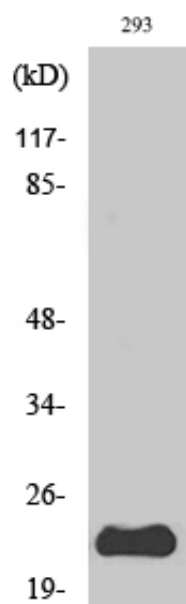
Catalog_no :	AT3907
Applications :	WB,ELISA
Reactivity :	Human,Mouse,Rat
Category :	抗原抗体
Size :	100µg/50µg/20µg
Gene_name :	BBC3
Protein_name :	Bcl-2-binding component 3
Humangene_id :	27113
Humanswissprot_no :	Q9BXH1
Mousegene_id :	170770
Mouseswissprot_no :	Q99ML1
Ratgene_id :	317673
Ratswissprot_no :	Q80ZG6
Immunogen :	The antiserum was produced against synthesized peptide derived from human PUMA. AA range:120-169
Specificity :	PUMA Polyclonal Antibody detects endogenous levels of PUMA protein.
Formulation :	Liquid in PBS containing 50% glycerol, 0.5% BSA and 0.02% sodium azide.
Source :	Rabbit
Dilution :	Western Blot: 1/500 - 1/2000. ELISA: 1/10000. Not yet tested in other applications.
Purification :	The antibody was affinity-purified from rabbit antiserum by affinity-chromatography using epitope-specific immunogen.
Concentration :	1 mg/ml
Storage_stability :	-20°C/1 year
Msds :	MSDS_Antibody.pdf



Other_name : BBC3; PUMA; Bcl-2-binding component 3; JFY-1; p53 up-regulated modulator of apoptosis

Molecular Weight : 23KD

Product Images



Western Blot analysis of various cells using PUMA Polyclonal Antibody