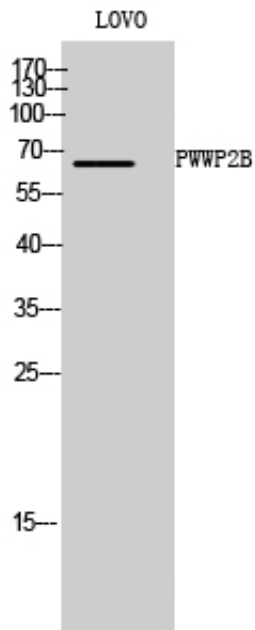




## PWWP2B Polyclonal Antibody

Catalog_no :	AT3909
Applications :	WB,IHC-p,ELISA
Reactivity :	Human
Category :	抗原抗体
Size :	100µg/50µg/20µg
Gene_name :	PWWP2B
Protein_name :	PWWP domain-containing protein 2B
Humangene_id :	<a href="#">170394</a>
Humanswissprot_no :	<a href="#">Q6NUJ5</a>
Immunogen :	The antiserum was produced against synthesized peptide derived from human PWWP2B. AA range:268-317
Specificity :	PWWP2B Polyclonal Antibody detects endogenous levels of PWWP2B protein.
Formulation :	Liquid in PBS containing 50% glycerol, 0.5% BSA and 0.02% sodium azide.
Source :	Rabbit
Dilution :	Western Blot: 1/500 - 1/2000. Immunohistochemistry: 1/100 - 1/300. ELISA: 1/20000. Not yet tested in other applications.
Purification :	The antibody was affinity-purified from rabbit antiserum by affinity-chromatography using epitope-specific immunogen.
Concentration :	1 mg/ml
Storage_stability :	-20°C/1 year
Msds :	MSDS_Antibody.pdf
Other_name :	PWWP2B; PWWP2; PWWP domain-containing protein 2B
Molecular Weight :	64KD

## Product Images



Western Blot analysis of LOVO cells using PWWP2B Polyclonal Antibody